

Kansas Historic Sites Board of Review
February 26, 1994 9:30 a.m.
Kansas Museum of History

The meeting was called to order by vice-chair Judith Major. Other board members present were Tom Barr, David DeBusman, Herchel Crainer, Tom Groneman, Mary Maley, Jeanne McKenna, Ramon Powers, Mark Sheeks, Tom Witty, and Cooper Woodring. Staff members of the Historic Preservation Office in attendance were Dick Pankratz, Sandy McDaniel, Desmond Anyanwu, Larry Jochims, Martha Hagedorn-Krass, Carl Magnuson, Kim Rivera, and Courtney Swann. Interested members of the public were also present.

Judith Major explained that the Governor had appointed three new board members since the December meeting, one of whom had replaced the board chair, Sara Ullmann. As the elected vice-chair, she was presiding over the meeting. A new chair will be selected at the May meeting. Judith asked the three new board members to introduce themselves. They are Herchel Crainer III from Hutchinson, Tom Groneman from Kansas City, and Mark Sheeks from Topeka.

Cooper Woodring made a motion to approve the minutes of the December meeting, Ramon Powers seconded and it carried.

Martha Hagedorn-Krass then gave a slide presentation on landscape architecture.

The board was then informed about a number of issues. Ramon reported that the Historical Society had received a \$500,000 grant from Koch Industries of Wichita to renovate the Potawatomi Baptist Mission. The completion is slated for late fall of 1994. The Society budget, with an allocation of \$1.8 million for furnishings for the new building, has passed on the House floor and is now in a Senate subcommittee. The new building is scheduled for completion in spring of 1995 with occupancy set for February 2, 1995. Ramon and Dick Pankratz will attend the National Conference of State Historic Preservation Officers in Washington, DC, March 19-23. While there they will discuss the National Park Service allocation for Kansas. Courtney Swann reported on the progress of past and present Heritage Trust Fund grant projects. Approximately fifty applications are expected for this year's round of grants. Martha gave a report on the Preservation Planning Document prepared for the National Park Service, and Kim Rivera reported on a strategic planning retreat held in February for the Cultural Resources Division.

Board member Tom Witty will be retiring as State Archeologist on March 18. He will be honored on March 4 at a 7:00 p.m. reception held for the Flint Hills Archeological Conference at the Knights of Columbus Hall, 3709 SW Burlingame Road, Topeka. Board members were invited to attend.

Martha presented nominations to the board for consideration to the national and state register. All nominations were unanimously accepted unless otherwise noted.

STATE REGISTER

Clock Tower Building, 701 Oregon, Hiawatha, Brown County
(Motion-Witty) (Second-Woodring)

(Old) St. Aloysius Catholic Church, NE 1/4, NW 1/4, S22, T29S, R22E, Greenbush, Crawford County
(Motion-Powers) (Second-Maley)
(The nomination included the 1881 stone church as well as the ruins of the 1907 church.)

Gilmore-Kent Farm, SW 1/4, NW 1/4, S5, T3S, R20E, Sparks vicinity, Doniphan County
(Motion-Major) (Second-McKenna)
(The stone farm house and the storm cellar were the two buildings approved for listing.)

NATIONAL REGISTER

Leithoff-Powers Ranch, S24 & N 1/2, S25, T12S, R6E, Junction City vicinity, Geary County
(Motion-Woodring) (Second-Powers)

Possible dates of May 6,7 and May 13,14 were discussed for the next board meeting. Postcards will be sent with the minutes for board members to mark their preference.

Virginia Wulfschle gave a presentation on Kansas Archeology Week, April 3 to 9, and presented board members with posters and other literature.

The board gave the chair approval to appoint a committee to review the 1994 Heritage Trust Fund grant applications and to report back to the full board with its recommendations.

The meeting adjourned at 12:20 p.m.

DATE February 26, 1994

REVIEW BOARD TALLY SHEET

Property Clock Tower Building, 701 Oregon, Hiawatha, Brown CountyMotion by Tom Witty to APPROVE DISAPPROVE TABLESeconded by Cooper Woodring

NAME	YES	NO	ABSTAIN
Thomas B. Barr			
XXXXXXXXXXXX Mary Maley			
J. Eric Engstrom HERCHEL CRAINER			
(Governor's Designee) MARK SHEEKS			DISAPPROVE
XXXXXXXXXXXX J. David DeBusman			
XXXXXXXXXXXX Cooper C. Woodring			
Judith Major			
Jeanne McKenna			
Ramon Powers			
Sara Ullmann TOM GRONEMAN			
Thomas A. Witty			

Disposition

APPROVED

DISAPPROVED

TABLED

If disapproved, reasons were: _____

Dave Nachtigal - owner

DATE February 26, 1994

REVIEW BOARD TALLY SHEET

Property (Old) Aloysius Catholic Church, NE 1/4, NW 1/4, S22, T29S, R22E, Greenbush,Motion by Ramon Powers to APPROVE DISAPPROVE TABLE Crawford CountySeconded by Mary Maley

NAME	YES	NO	ABSTAIN
Thomas B. Barr			
XXXXXXXXXXXXXXXXXX Mary Maley			
J. Eric Engstrom HERCHEL CRAINER			
(Governor's Designee) MARK SNEEKS			
XXXXXXXXXXXXXXXXXX J. David DeBusman			
XXXXXXXXXXXX Cooper C. Woodring			
Judith Major			
Jeanne McKenna			
Ramon Powers			
Sara Ullmann- TOM GRONEMAN			
Thomas A. Witty			

Disposition

APPROVED

DISAPPROVED

TABLED

If disapproved, reasons were: _____

Judy Jacquinet

for House & cellar

DATE February 26, 1994

REVIEW BOARD TALLY SHEET

Property Gilmore-Kent Farm, SW 1/4, NW 1/4, S5, T3S, R20E, Sparks vicinity, Doniphan Co.

Motion by Judith Major to APPROVE DISAPPROVE TABLE

Seconded by Jeanne McKenna

NAME	YES	NO	ABSTAIN
Thomas B. Barr			
XXXXXXXXXXXX Mary Maley			
J. Eric Engstrom HERCHEL CRAINER			
(Governor's Designee) MARK SHEERS			
XXXXXXXXXXXX J. David DeBusman			
XXXXXXXXXX Cooper C. Woodring			
Judith Major			
Jeanne McKenna			
Ramon Powers			
Sara Ullmann TOM GROWEMAN			
Thomas A. Wittv			

Disposition

APPROVED

DISAPPROVED

TABLED

If disapproved, reasons were: _____

Julie Norrell - owner

DATE February 26, 1994

REVIEW BOARD TALLY SHEET

Property Leithoff-Powers Ranch, Sec. 24 & N 1/2, 325, T12S, R6E, Junction City vicinity
Geary CountyMotion by Cooper C. Woodring to APPROVE DISAPPROVE TABLESeconded by Ramon Powers

NAME	YES	NO	ABSTAIN
Thomas B. Barr			
XXXXXXXXXXXXXXXX Mary Maley			
J. Eric Engstrom HERCHEL CRAINER			
(Governor's Designee) MARK SHEEKS			
XXXXXXXXXXXXXXXX J. David DeBusman			
XXXXXXXXXXXX Cooper C. Woodring			
Judith Major			
Jeanne McKenna			
Ramon Powers			
Sara Ullmann TOM GROVEMAN			
Thomas A. Witty			

Disposition

APPROVED

DISAPPROVED

TABLED

If disapproved, reasons were: _____

Harris Powers

ATTENDANCE SHEET

(Please Print)

NAME

ADDRESS

- | | |
|---------------------------|---------------------------|
| 1. DAVID VACHTIGAL | HIAWATHA KANSAS |
| 2. Judy Jaegermest | Girard Kansas |
| 3. Robert Cartton | Hawatha Kansas |
| 4. Eileen Jaegermest | Girard, KS. |
| 5. Terry Jaegermest | Topeka, KS. |
| Rosemary O'Toole | Girard (Greenbush) Kansas |
| 7. Francis O'Toole | Girard " Kansas |
| 8. H. P. Powers | Topeka, KS. |
| 9. Margaret O'Toole | Girard (Greenbush) KS. |
| 10. Margaret Hayden | Topeka, KS |
| 11. Bernie Hayden | Topeka, KS |
| 12. Sharon Doherty | Girard (Greenbush) KS |
| 13. John Doherty | Girard (Greenbush) KS |
| 14. Kelly Powers Dietrich | Topeka |
| 15. Warren | " |

ATTENDANCE SHEET

(Please Print)

NAME

ADDRESS

1. Marguerite Westhoff

Libard, Ks. (Greenbush Ks.)

2. Sam & Julie Dorell

Highland, Ks

3. Virginia Kulkubbe

KS45

4. _____

5. _____

7. _____

8. _____

9. _____

10. _____

11. _____

12. _____

13. _____

14. _____

15. _____

Kansas Historic Sites Board of Review
May 7, 1994
Santa Fe Trail Center, Larned, KS

The meeting was called to order at 9:30 a.m. by vice-chair Judith Major. Other board members present were David DeBusman, Herchel Crainer, Tom Groneman, Mary Maley, Jeanne McKenna, Ramon Powers, Mark Sheeks, and Cooper Woodring. Board members Tom Witty and Tom Barr were absent. Staff members of the Cultural Resources Division present were Dick Pankratz, Sandy McDaniel, Larry Jochims, Martha Hagedorn-Krass, Carl Magnuson, Kim Rivera, Courtney Swann, Martin Stein, and Marsha King. Also present were interested members of the public.

Judith Major informed the audience of the process the board uses for the consideration of nominations. Board members and staff members were asked to identify themselves for the audience.

Mary Maley moved to accept the minutes of the February board meeting, Herchell Crainer seconded, and it carried.

The election of a new chairman was postponed until the August meeting which would be the regular time for an election according to the board's rules of procedure. By consensus Judith continued to preside over the meeting.

Dick Pankratz gave an update on Cultural Resource Division activities since the last meeting of the board. The committee to select the 1994 Governor's Awards for Historic Preservation was composed of review board members David DeBusman and Mark Sheeks and Lawrence preservation planner Linda Finger. They met on April 26 and recommended three recipients: J. Eric Engstrom, Wichita, former review board member; Peabody Main Street Program; and current review board member Tom Witty. The awards will be presented on Monday, May 9, at 10:00 a.m. in the governor's office. Two properties have been added to the National Register list since the last review board meeting--the Graber House and St. Teresa's Catholic Church, both in Hutchinson. The National Register listings for Kansas now total 622.

Ramon Powers updated the board on Historical Society legislative matters. \$1.8 million for furnishings for the new Center for Historical Research was allocated this session. Also approved was money for the move to the new center. There is continued support for the realignment or transfer of three historic sites to local control. The legislature shifted some funding around so the proposal for an admission fee for the museum did not pass this session. Consideration of the Heritage Trust Fund review committee recommendations was next on the agenda. Judith presented the committee's report. The committee consisted of board members Tom Groneman, Cooper Woodring, and Judith Major. Jeanne McKenna made a motion that the board accept the committee's recommendations, Ramon seconded, and it carried.

Listed in alphabetical order are the recipients and the amounts awarded each.

Carnegie Library, Dodge City Roof and Building Stabilization	\$85,000
Carnegie Library, Leavenworth Stabilization	\$42,350
Clay County Courthouse, Clay Center Tower and Roof Repair	\$75,000
Davis Memorial, Hiawatha Restoration Project	\$20,000
Fox Theater, Hutchinson Roof, Drainage, and Masonry Repair	\$75,000
Fromme Birney Barn, Mullinville Stabilization/Restoration	\$74,975
McPherson Opera House, McPherson West Wall Facade Restoration	\$75,000
Norris Service Station, Glen Elder Rehabilitation	\$18,400
Steinbuchel House, Wichita Exterior Renovation (Roofing)	\$59,680
University Hall, Friends University Tower Repair and Wall Stabilization	\$75,000
Whitney Ranch, Elmdale Foundation Repairs Deterioration	\$11,600

Consideration of nominations to the state and national registers was next on the agenda.

NATIONAL REGISTER

Santa Fe Trail Multiple Property Nomination (The board heard presentations on twenty Santa Fe Trail sites but only seven were presented for nomination.) Those seven and the action taken are listed below. All nominations were approved.

1) Douglas County Trail Segments, Douglas County Prairie Park, 3 miles east of Baldwin on US-56, Douglas County

(Motion--Crainer) (Second--Woodring)

Mention of Sibley marker to be removed from nomination.

2) Havana Stage Station, 4 1/2 miles west of Burlingame on K-31, Osage County

(Motion--DeBusman) (Second--McKenna)

Boundary map to be included and mention of the town of Havana.

3) Samuel Hunt Grave, 4 3/4 miles west of Burlingame on K-31, Osage County

(Motion--Maley) (Second--Crainer)

4) Six Mile Stage Station, 2 1/2 miles north of Burdick, Morris County

(Motion--Woodring) (Second--Powers)

5) Marion County Trail Segments, 4 miles west and 3 miles south of Durham, Marion County

(Motion--Crainer) (Second--Maley)

6) Station Little Arkansas, 5 miles east and 5 miles south of Little River, Rice County

(Motion--Major) (Second--McKenna)

7) Rice County Trail Segments, 4 miles west and 3/4 mile north of Chase, Rice County

(Motion--Powers) (Second--Maley)

The other thirteen Santa Fe Trail sites and the recommendations of the board are as follows:

McGee-Harris Stage Station--further investigation recommended;

Dragoon Creek Crossing--needs further archeological work;

Solder Creek Crossing--requires further archeological research;

Cottonwood Creek Crossing Historic District--boundaries need extending and further research required;

Little Arkansas River Crossing--further archeological research required;

Owl Creek Crossing--recheck documentary research;

Coon Creek Crossing--further research required;

Black Pool and the Santa Fe Trail--further investigation of Black Pool;

Fort Hays-Fort Dodge Road/Pawnee Fork Historic District--further archeological research;

Fort Hays-Fort Dodge Road/Sawlog Creek Crossing--further archeological research;
Middle Spring--nomination should include campground;
Morton County Trail Segments--further investigation recommended;
Kearny County Trail Segments--not all ruts on property were included in the nomination;

The board adjourned for lunch at 12:00 noon.

The last property presented to the board for nomination was the J.A. Koller House in Manhattan.

STATE REGISTER

J. A. Koller House, 612 Houston, Manhattan, Riley County
(Motion--McKenna) (Second--Maley)
A roll call vote was taken on the nomination. Yes--McKenna, Major, Maley. No--Crainer, DeBusman, Groneman, Sheeks, Woodring. (Dr. Powers left the meeting before the vote was taken to return to Topeka for other business.) The nomination was not approved.

The time and place for the August board meeting was discussed. Post cards will be mailed to board members to mark their preference.

A resolution was read by Cooper Woodring expressing appreciation to the personnel at Historic Fort Larned for their willingness to accommodate the board on a tour of the facility.

A resolution was read by David DeBusman expressing appreciation to Ruth Olsen Peters, director of the Santa Fe Trail Center at Larned and other personnel for extending us their hospitality. Both resolutions were unanimously accepted. Those resolutions are enclosed and are herewith made a part of the minutes.

The meeting adjourned at 3:00 p.m.

RESOLUTION

WHEREAS, the Kansas Historic Sites Board of Review has held its May 7, 1994, meeting in Larned in order to visit Santa Fe Trail sites in the area in conjunction with its consideration of the Santa Fe Trail Multiple Property nomination; and

WHEREAS, the board has been able to conduct its meeting in the facilities of the Santa Fe Trail Center; and

WHEREAS, Ruth Olsen Peters, director of the Santa Fe Trail Center, and her staff have been extremely helpful to staff in making logistical arrangements for this meeting;

NOW, THEREFORE, be it resolved that the Kansas Historic Sites Board of Review expresses to Ruth Olsen Peters, the staff of the Santa Fe Trail Center, and the Fort Larned Historical Society its warmest thanks for the use of the facility and the great cooperation in the planning and conduct of this meeting.

Approved by the Kansas Historic Sites Board of Review on May 7, 1994.

Signed _____

RESOLUTION

WHEREAS, the Kansas Historic Sites Board of Review and staff of the Kansas State Historical Society enjoyed a guided tour of the Fort Larned National Site on May 6, 1994; and

WHEREAS, superintendent Steve Linderer, park ranger George Elmore, and other staff and volunteers at the Fort Larned National Historic Site went to great efforts to make our visit to Fort Larned both an entertaining and an educational experience;

NOW, THEREFORE, be it resolved that the Kansas Historic Sites Board of Review extends its thanks and appreciation to all the Fort Larned staff for their hospitality and thoughtfulness.

Approved by the Kansas Historic Sites Board of Review on May 7, 1994.

Signed _____



KANSAS STATE HISTORICAL SOCIETY

ARCHEOLOGY OFFICE

Center for Historical Research

120 West Tenth • Topeka, Kansas 66612-1291

913-296-4779 • FAX 913-296-1005

MEMORANDUM

TO: Members of the Kansas Historic Sites Board of Review

FROM: Martin Stein, Archeologist, Archeology Office

DATE: April 11, 1994

RE: Synopsis: "Historic Resources of the Santa Fe Trail, 1821-1880"

This multiple property National Register of Historic Places nomination is an outgrowth of the study completed by the National Park Service (NPS) for the Comprehensive Management and Use Plan and Environmental Assessment: Santa Fe Trail. The NPS study included visits to various places associated with the trail by a study team consisting of Park Service personnel, historians, landowners, and local trail experts. The study, while not comprehensive, identified a number of trail related sites that appeared to be potentially eligible for listing on the National Register. It should be stressed, however, that a systematic survey of the campgrounds and surviving traces of the trail located in Kansas has yet to be completed. The NPS, Branch of Long Distance Trails, located in Santa Fe, New Mexico contracted with the State Historic Preservation Officer of New Mexico, to manage the nomination. The New Mexico Preservation Officer in turn hired The Urbana Group of Champaign-Urbana, Illinois to evaluate a number of properties and prepare the nomination. This multiple property nomination includes properties located in Missouri, Kansas, Oklahoma, Colorado, and New Mexico, but the majority are located in Kansas. Property types in Kansas included in the nomination are segments of trail ruts, campgrounds, a grave site, a landmark, and ruins of buildings.

Members of the Cultural Resources Division of the Kansas State Historical Society reviewed a draft nomination in 1992 and field checked the individual properties in 1993. Major criticisms of the draft nomination, reviewed by Martha Hagedorn-Krass (Architectural Historian), Larry Jochims (Historian), and Martin Stein (Archeologist), were that some properties proposed for nomination had been defined by arbitrarily drawn boundaries and that there was no attempt to define the associated archeological components of campgrounds that were proposed for nomination. The inspection of individual properties proposed for nomination was completed in 1993 by Larry Jochims, Kim Rivera (Architect), and Martin Stein. This field check revealed errors of description and interpretation of some properties proposed for nomination. Marsha King (Archeologist) has recently joined our nomination review team. Her doctoral dissertation topic examines how the Santa Fe Trail affected settlement within the state. She is also familiar with the Cottonwood Creek Crossing nomination through her work as a special projects archeologist. She has evaluated the site as part of a road realignment project.

In addition to the staff review, the National Park Service asked for an independent review of the nomination forms by selected members of the Santa Fe Trail Association. Comments were provided to us by George Elmore, National Park Service - Fort Larned; David Clapsaddle, historian - Larned; William

Memorandum, Kansas Historic Sites Board of Review

Page 2

April 11, 1994

Chalfant, attorney and historian - Hutchinson; Paul Bentrup, Santa Fe Trail property owner - Deerfield; Ralph Hathaway, Santa Fe Trail property owner - Chase; Katharine Kelly, historian - Baldwin; and Donald Cress, historian - Council Grove. Comments were also received from Allen Kane, Forest Service Archeologist, concerning the nominations for Middle Spring and the Morton County segments of the trail, which are located on the Cimarron National Grassland. Reviewers sometimes identified the same problems with the nominations as the staff, but also had other critical comments.

This multiple resource nomination was prepared as one document. The State Historic Preservation Officer of New Mexico intends to submit it to the Keeper of the National Register as a package, after consideration by the review boards in each state. Our office review of the nomination materials, as well as comments by independent reviewers, and our field review of the individual properties in Kansas have identified a number of problems. It is staff opinion that only seven of the nominations can be forwarded to the Keeper in their present form. These properties are highlighted in bold type. Some of the other properties may be eligible for listing on the National Register but require additional field work and/or changes to the the nomination form to properly describe them.

This summary follows the order of the properties contained in the multiple property nomination form. The numbers correspond to numbers used in the National Park Service master plan for the Santa Fe Trail.

OK #59 Santa Fe Trail (Douglas County Trail Segments) - This property consists of four ruts and two limestone markers attributed to the 1825 Sibley survey. Katharine Kelly says the limestone markers were placed at the site in 1965 and are not historical.

OK #64 McGee-Harris Stage Station - This property is located on 110 Mile Creek. The crossing here was well known to trail travelers prior to 1854 when Fry McGee built a toll bridge and provided accommodations for wagon and stage passengers. His son-in-law Harris built an adjoining store and residence which he operated until 1866. The Atchison, Topeka and Santa Fe rails reached nearby Burlingame by 1869 which effectively closed this portion of the trail. The nomination form does not adequately describe the property. The site is primarily an archeological site, but no archeological evaluations have been done. There are errors in describing the surface features at the site.

OK #66 Dragoon Creek Crossing - This property consists of a creek crossing. No physical evidence for the crossing remains. The boundaries have been arbitrarily drawn. Marc Simmons (Following the Santa Fe Trail) says this crossing is on a branch of the trail, not the main trail as claimed by the consultant.

OK #67 Havana Stage Station - The stage station and town of Havana were begun in 1858 and lasted approximately ten years. The site today has the ruins of the station, possibly ruins of the town's hotel and stable. Six houses were reportedly located here also, as well as a brewery/distillery. *incl. of boundary map*

OK #68 Samuel Hunt Grave - This property consists of the grave of Private Samuel Hunt of Kentucky who was buried here in 1835. *Dave - Jean - Mary Hunt*

#69 Soldier Creek Crossing - This property is a creek crossing. The physical remains of the trail could not be distinguished from erosional features. This property lacks integrity.

Memorandum, Kansas Historic Sites Board of Review

Page 3

April 11, 1994

not going
#81 Six Mile Stage Station - This property consists of four sets of ruts, the ruins of a stage station, and archeological remains of other features associated with the stage station. The stage station was used only for a short period of time, from 1863 until 1866 or 1867. Although no archeological evaluation of the site has been done, the boundaries apparently include all the relevant site features (blacksmith shop, corral, well). *Cooper Ramon*

#83 Cottonwood Creek Crossing Historic District - This property consists of ruts and a stream crossing. The property is primarily significant for its archeological remains, but no archeological evaluation has been done. The boundaries of the crossing have been drawn arbitrarily, as there is no physical evidence. This nomination fails to identify the significant features of the property. *Dave Mary*

#84 Santa Fe Trail (Marion County Trail Segments) - This property consists of a series of trail ruts.

more archeo research
#87 Little Arkansas River (Upper) Crossing - This property consists of a large cottonwood tree, trail ruts, and a crossing. The trail split at this location and there were two crossings located approximately one-half mile apart. The upper crossing was older. Staff found recent disturbance at the reported location of the trail and could not discern the trail ruts. This property has a potentially significant archeological component, but this has not been identified.

OK #88 Station Little Arkansas - This property has the remains of dugouts and the former location of a cemetery. Troops were stationed here in 1865 and again in 1867 to provide protection from Plains Indian attacks. *Judith Jean*

more research
#90 Owl Creek Crossing - This property consists of a creek crossing. There is no physical evidence of the crossing. The boundaries have been arbitrarily drawn.

OK #93A Santa Fe Trail (Rice County Trail Segments) - This property consists of a set of ruts. *Ramon Mary*

#103 Coon Creek Crossing - This property consists of swales in the creek bank and a possible dugout depression. The nomination describes this location as on the Santa Fe Trail, but David Clapsaddle has identified it as on the route of the military road from Fort Larned.

Does Black
#104 Black Pool and the Santa Fe Trail - This property consists of a series of ruts and an ephemeral pool located in an intermittent stream. There is no mention of the Black Pool in historical accounts of the trail.

archeo
#108 Fort Hays - Fort Dodge Road/Pawnee Fork Historic District - This property consists of a river crossing, swales on the river bank, and ruts. One of the features identified in the form as a "cutdown" for the trail is actually a modern trench silo.

archeo
#109 Fort Hays - Fort Dodge Road/Sawlog Creek Crossing - This property consists of ruts and a cutdown on the banks of the creek. Additional cutdowns and crossings are present but not identified in the nomination.

include Campground
#117 Middle Spring - This property consists of a spring. The nomination does not include the associated campground.

it is in place
#118 Santa Fe Trail (Morton County Trail Segments) - This property includes ruts and a portion of the Point of Rocks landmark. Staff, and the Forest Service Archeologist, have found the "ruts" to be modern day contour terraces created by the Soil Conservation Service, not Santa Fe Trail related phenomena.
a lot of real ants not nominated

Memorandum, Kansas Historic Sites Board of Review

Page 4

April 11, 1994

#193 Santa Fe Trail (Kearny County Trail Segments) - This property consists of ruts. The landowner has stated that the nomination does not include all ruts located on the property.

The map illustrates the Santa Fe Trail segments in Morton County, North Dakota. Key locations and features include:

- Santa Fe Trail (Morton County Trail Segments)**: The main trail route is shown as a dashed line.
- Fort Hays - Fort Dodge Road**: A major road segment is marked.
- Black Rock Pool and the Santa Fe Trail**: A specific location is marked.
- Cottonwood Creek Crossing Historic District**: A designated area is marked.
- Santa Fe Trail (Morton County Trail Segments)**: Another segment of the trail is marked.
- Boulder Creek Crossing**: A crossing point is marked.
- McGee-Harris Stage Station**: A stage station is marked.
- Santa Fe Trail (Douglas County Trail Segments)**: The trail continues into Douglas County.
- Little Arkansas River (Upper) Crossing**: A crossing point is marked.
- Cottonwood Creek Crossing Historic District**: Another designated area is marked.

The map is divided into sections by dashed lines, with township and range numbers indicated. The map is oriented with North at the top.

State Point of Rocks
Morton County Trail Segment(s)

REPORT OF THE 1994 HERITAGE TRUST FUND GRANT REVIEW COMMITTEE

On March 23 the Heritage Trust Fund Grant Review Committee, which is composed of Cooper Woodring, Thomas Groneman, and myself, Judith Major, was given a presentation by Kansas Historic Preservation Office staff concerning the 1994 grant applications for the Heritage Trust Fund. During the meeting the staff members showed slides of the properties and provided brief descriptions of the projects. The committee members were then given copies of the applications for review. A summary of this year's applications is attached as an addendum to your copy of this report. On April 25, 1994 the committee met again to discuss its final rankings and to prepare a list of recommendations to the board. This was by far the most competitive round to date. The committee received 68 applications requesting a total of more than \$4,000,000 in grant funds. Employing the criteria stated in the legislation that created the fund, the committee ranked the applications and funded as many as the available resources would allow. All told, \$612,005 was awarded to eleven properties across the state. Following is the list of properties recommended for funding in the 1994 round of Heritage Trust Fund grants. They are listed in alphabetical order according to their historic names.

Carnegie Library, Dodge City Carnegie Center: Roof and Building Stabilization	\$85,000
Carnegie Library, Leavenworth Carnegie Building: Stabilization	\$42,350
Clay County Courthouse, Clay Center Clay County Courthouse: Tower and Roof Repair	\$75,000
Davis Memorial, Hiawatha Davis Memorial: Restoration Project	\$20,000
Fox Theater, Hutchinson Fox Theater: Roof, Drainage, and Masonry Repair	\$75,000
Fromme Birney Barn, Mullinville Fromme Birney Round Barn: Stabilization/Restoration	\$74,975
McPherson Opera House, McPherson McPherson Opera House: West Wall Facade Restoration	\$75,000
Norris Service Station, Glen Elder Norris Castle Service Station: Rehabilitation	\$18,400
Steinbuchel House, Wichita Steinbuchel House: Exterior Renovation (Roofing)	\$59,680
University Hall, Friends University Davis Administration Building: Tower Repair and Wall Stabilization	\$75,000
Whitney Ranch, Elmdale Whitney Ranch: Foundation Repairs Deterioration.	\$11,600

Unfortunately, as is always the case, it was not possible to fund all of the deserving projects for which applications were submitted. The committee members are pleased with the diversity of properties addressed in the high ranking proposals. Among the properties recommended for funding are two Carnegie Library buildings, a county courthouse, two theaters, a university building, a unique gasoline station, a private residence, a barn and a collection of ranch outbuildings. The properties also are located in rural areas, small towns, and major urban centers in locations across the state. The maps attached to this report provide an idea of the distribution of the properties across the state.

The committee also recommends that the Chicken Creek bridge in Douglas County be considered as a first alternate for funding in the event that any of the applicants listed above are unable to accept the award. Should this project be funded, grant monies would be provided to disassemble and accurately reconstruct the stone arch bridge. We also propose the Runnymede Church in Harper as a second alternate. In this project funds would be provided to replace the deteriorated foundation. The amount of the grants provided to the alternates as well as the scope of work defined for these projects will be determined when the funds become available.

Summaries of the recommended projects are listed on the two pages which follow this report. We hope these projects meet with your approval and that you will choose to forward them to the State Historic Preservation Officer for his review.

Heritage Trust Fund Grant Review Committee
Judith Major
Cooper Woodring
Thomas Groneman

PROJECTS RECOMMENDED TO RECEIVE 1994 HERITAGE TRUST FUND GRANTS

Carnegie Library, Dodge City

Dodge City Arts Council

Repair and/or replacement of terne metal roof. Repair of guttering system and wood soffit. Miscellaneous tuckpointing and removal of stone coating at foundation level. Modifications to perimeter grade to prevent collection of water adjacent to the structure.

Grant Award \$ 85,000

Total Project \$ 220,666

Carnegie Library, Leavenworth

Carnegie Arts Center

Installation of a perimeter foundation drain to halt the penetration of ground moisture through the foundation wall.

Grant Award \$ 42,400

Total Project \$ 52,937

Clay County Courthouse, Clay Center

Clay County

Repair of roofing system on the tower and main roof. Tiles will be salvaged and reinstalled, replacement will occur only when tiles are severely damaged.

Tuckpointing on the tower and repairs to tower windows and louvered vent openings is also included. Repair of the clock hands and painting of metal and wood is to be completed along with the preparation of a maintenance plan and inspection report form.

Grant Award \$ 75,000

Total Project \$ 177,140

Davis Memorial, Hiawatha

Hiawatha Cemetery Association

Work would include consolidation of deteriorated stone, repair and/or replacement of foundations and miscellaneous grading.

Grant Award \$ 20,000

Total Project \$ 25,000

Fox Theatre, Hutchinson

Hutchinson's Historic Fox Theatre, Inc.

Roof replacement with installation of proper downspout system and flashing. Funding is also requested for tuckpointing of masonry and recoating after pointing activities.

Grant Award \$ 75,000

Total Project \$ 105,139.89

Fromme Birney Round Barn, Mullinville

Kiowa County Historical Society

Installation of a new shingle roof, repair damaged structural members, repair and reinstall weather vane & finial. Installation of windows and doors to match original. Repair wood siding, prime, and paint.

Grant Award \$ 74,975

Total Project \$ 93,720

McPherson Opera House, McPherson

McPherson Opera House Preservation Co., Inc.

Reconstruction of west facade using original numbered and salvaged materials.

Grant Award \$ 75,000

Total Project \$ 93,000

Norris Service Station, Glen Elder

Dan Winkel

Roof replacement and miscellaneous tuckpointing. Funding for minimal interior plaster repairs of damaged areas is also requested.

Grant Award \$ 18,400

Total Project \$ 23,000

Steinbuchel House, Wichita

David & Nancy Cullen

Repair of slate roofing system. Pointing and rebuilding of three chimneys. Work would include repair of guttering system, painting of cornice and gable trim, and the conservation of gable windows.

Grant Award \$ 59,680

Total Project \$ 78,684

University Hall, Friends University, Wichita

Friends University

This property received a 1993 HTF Planning Grant and is now requesting construction funding for two of the seven most critical problems. The project includes the stabilization of the clock tower masonry and the installation of additional structural support for the east wall at the fourth floor, north end.

Grant Award \$ 75,000

Total Project \$ 208,800

Whitney Ranch, Elmdale vicinity

Edward and Sharon Whitney

Includes foundation repairs on the outbuildings. Project would also include stabilization of chicken coop.

Grant Award \$ 11,600

Total Project \$ 14,500

DATE May 7, 1994

REVIEW BOARD TALLY SHEET

Property Douglas Co Trail Segments, Douglas Co. Prairie Park, 3 miles east of Baldwin
on US-56, Douglas County (Remove Sibley notation marker)Motion by Herschell Crainer to APPROVE DISAPPROVE TABLESeconded by Cooper Woodring

NAME	YES	NO	ABSTAIN
Thomas B. Barr <u>ABSENT</u>			
Herschel Crainer			
J. David DeBusman			
Thomas Groneman			
Jeanne McKenna			
Judith Major			
Mary Maley			
Ramon Powers			
Mark Sheeks			
Thomas A. Witty <u>ABSENT</u>			
Cooper C. Woodring			

Disposition

APPROVED

DISAPPROVED

TABLED

If disapproved, reasons were: _____

DATE May 7, 1994

REVIEW BOARD TALLY SHEET

Property Havana Stage Station, 4 1/2 mi west of Burlingame on K-31, Osage CountyMotion By (Staff recommends boundary map be included & mention of town of Havana)
David DeBusman to APPROVE DISAPPROVE TABLESeconded by Jeanne McKenna

NAME	YES	NO	ABSTAIN
Thomas B. Barr			
Herchel Crainer			
J. David DeBusman			
Thomas Groneman			
Jeanne McKenna			
Judith Major			
Mary Maley			
Ramon Powers			
Mark Sheeks			
Thomas A. Witty			
Cooper C. Woodring			

Disposition

APPROVED

DISAPPROVED

TABLED

If disapproved, reasons were: _____

DATE May 7, 1994

REVIEW BOARD TALLY SHEET

Property Samuel Hunt Grave, 4 3/4 mi west of Burlingame on K-31, Osage CountyMotion by Mary Maley to APPROVE DISAPPROVE TABLESeconded by Herschell Crainer

NAME	YES	NO	ABSTAIN
Thomas B. Barr <u>ABSENT</u>			
Herschel Crainer			
J. David DeBusman			
Thomas Groneman			
Jeanne McKenna			
Judith Major			
Mary Maley			
Ramon Powers			
Mark Sheeks			
Thomas A. Witty <u>ABSENT</u>			
Cooper C. Woodring			

Disposition

APPROVED

DISAPPROVED

TABLED

If disapproved, reasons were: _____

DATE May 7, 1994

REVIEW BOARD TALLY SHEET

Property Six Mile Stage Station, 2 1/2 mi north of Burdick, Morris CountyMotion by Cooper Woodring to APPROVE DISAPPROVE TABLESeconded by Ramon Powers

NAME	YES	NO	ABSTAIN
Thomas B. Barr <i>ABSENT</i>			
Herchel Crainer			
J. David DeBusman			
Thomas Groneman			
Jeanne McKenna			
Judith Major			
Mary Maley			
Ramon Powers			
Mark Sheeks			
Thomas A. Witty <i>ABSENT</i>			
Cooper C. Woodring			

Disposition

APPROVED

DISAPPROVED

TABLED

If disapproved, reasons were: _____

DATE May 7, 1994

REVIEW BOARD TALLY SHEET

Property Marion County Trail Segments, 4 miles west and 3 miles south of Durham, Marion County

Motion by Herschell Crainer to APPROVE DISAPPROVE TABLE

Seconded by Mary Maley

NAME	YES	NO	ABSTAIN
Thomas B. Barr <i>ABSENT</i>			
Herschel Crainer			
J. David DeBusman			
Thomas Groneman			
Jeanne McKenna			
Judith Major			
Mary Maley			
Ramon Powers			
Mark Sheeks			
Thomas A. Witty <i>ABSENT</i>			
Cooper C. Woodring			

Disposition

APPROVED

DISAPPROVED

TABLED

If disapproved, reasons were: _____

DATE May 7, 1994

REVIEW BOARD TALLY SHEET

Property Station Little Arkansas, 5 miles east and 5 miles south of Little River, Rice Co.Motion by Judith Major to APPROVE DISAPPROVE TABLESeconded by Jeanne McKenna

NAME	YES	NO	ABSTAIN
Thomas B. Barr <i>ABSENT</i>			
Herchel Crainer			
J. David DeBusman			
Thomas Groneman			
Jeanne McKenna			
Judith Major			
Mary Maley			
Ramon Powers			
Mark Sheeks			
Thomas A. Witty <i>ABSENT</i>			
Cooper C. Woodring			

Disposition

APPROVED

DISAPPROVED

TABLED

If disapproved, reasons were: _____

DATE May 7, 1994

REVIEW BOARD TALLY SHEET

Property Rice County Trail Segments, 4 miles west and 3/4 mi north of Chase, Rice CountyMotion by Ramon Powers to APPROVE DISAPPROVE TABLESeconded by Mary Maley

NAME	YES	NO	ABSTAIN
Thomas B. Barr			
Herchel Crainer			
J. David DeBusman			
Thomas Groneman			
Jeanne McKenna			
Judith Major			
Mary Maley			
Ramon Powers			
Mark Sheeks			
Thomas A. Witty			
Cooper C. Woodring			

Disposition

APPROVED

DISAPPROVED

TABLED

If disapproved, reasons were: _____

DATE May 7, 1994

REVIEW BOARD TALLY SHEET

Property J. A. Koller House, 612 Houston, Manhattan, Riley CountyMotion by Jeanne McKenna to APPROVE DISAPPROVE TABLESeconded by Mary Maley

NAME	YES	NO	ABSTAIN
Thomas B. Barr <u>ABSENT</u>			
Herchel Crainer		X	
J. David DeBusman		X	
Thomas Groneman		X	
Jeanne McKenna	X		
Judith Major	X		
Mary Maley	X		
Ramon Powers <u>ABSENT</u>			
Mark Sheeks		X	
Thomas A. Witty <u>ABSENT</u>			
Cooper C. Woodring		X	

Disposition

APPROVED

DISAPPROVED

TABLED

If disapproved, reasons were: 5 may, 3 yes,

ATTENDANCE SHEET

(Please Print)

NAME

ADDRESS

- | NAME | ADDRESS |
|----------------------------------|------------------------------------|
| 1. Samuel R. Tonti | Empire (Imperial Theatre) |
| 2. John J. Moller | ↓ ↓ ↓ |
| 3. Louise Jembar | Carnegie Center for Art Dodge City |
| 4. Lise Smalder | " " " " " |
| 5. Stanley and Kathleen Holthuis | Tucson az |
| 6. Ruth Olson Peters | Santa Fe Trail Center - Burned |
| 7. Jean Bighie Hill | Manhattan |
| 8. Berta Bloomberg Ellis | " |
| 9. Mary Ellis | Manhattan |
| 10. Rosalie Peter | Manhattan |
| 11. Fred Atchison | Manhattan |
| 12. George Hude Borst | 1624 Osage St.
Manhattan |
| 13. | |
| 14. | |
| 15. | |

Kansas Historic Sites Board of Review
August 20, 1994
Kansas Museum of History Topeka, KS

The meeting was called to order at 9:00 a.m. by vice-chair Judith Major. Other board members present were Tom Barr, David DeBusman, Herchell Crainer, Tom Groneman, Mary Maley, Jeanne McKenna, Ramon Powers, Mark Sheeks, and Tom Witty. Board member Cooper Woodring was absent. Staff members of the Historic Preservation Office present were Dick Pankratz, Sandy McDaniel, Larry Jochims, Martha Hagedorn-Krass, Carl Magnuson, Kim Rivera, and Courtney Swann. Interested members of the public were also present.

Judith Major informed the audience of the process the board uses for the consideration of nominations. Board members and staff members were asked to identify themselves for the audience.

Herchell Crainer moved to accept the minutes of the May 7, 1994, board meeting, Ramon Powers seconded, and it carried.

Election of officers was next on the agenda. Ramon nominated Judith Major to serve as chairman, Mary Maley seconded the motion, and it carried. Judith Major nominated Cooper Woodring to serve as vice-chairman, Tom Groneman seconded the motion, and it carried.

Dick Pankratz updated the board on program matters since the May meeting. Five properties were added to the National Register--the Elk Falls Pratt Truss bridge, the Doney-Clark House in Kingman, the Frank Wolcott House in Hutchinson, the Missouri Pacific Depot in El Dorado, and the Mugler Lodge Archeological Site near Clay Center. Ramon Powers reported that the contract on the Pottawatomie Baptist Mission has been let. The Mission will be used as an education center. The completion date is scheduled for the end of the year. The new facility for the Research Center is about three months behind schedule. Ramon attended the National Conference for State Historic Preservation Officers (NCSHPO) in Vermont in July. He serves on the NCSHPO's critical issues subcommittee. The National Park Service is in the process of downsizing its staff by about 1,200 persons.

Judith Major presented to the board a policy that staff had developed at board members' request governing how speakers address the board. Members discussed the policy and proposed that in the first sentence of the second paragraph the word shall be changed to should. Herchell Crainer made a motion to accept the policy as amended, Jeanne McKenna seconded the motion, and it carried. A copy of that policy is attached to these minutes.

A five-minute break was taken.

Martha Hagedorn-Krass presented nominations to the board for consideration to

the national and state register. All nominations were unanimously accepted unless otherwise noted.

STATE REGISTER

NHRA (SRCA) Drag Strip, Great Bend Expo Area, West 10th St., Great Bend, Barton County

(Motion--McKenna)

(Second--DeBusman)

Herchell Crainer and Mary Maley recorded no votes.

NATIONAL REGISTER

(Old) English Lutheran Church, 1040 New Hampshire, Lawrence, Douglas County

(Motion--Crainer)

(Second--Maley)

William A. Quayle House, 210 N. 6th, Baldwin, Douglas County

(Motion--Major)

(Second--Powers)

Elk River Marsh Arch Bridge, US-75, Independence, Montgomery County

After much discussion from interested parties, Herchell Crainer made a motion to table the nomination until the November board meeting, Mark Sheeks seconded, and it carried. It was the board consensus that the Historical Society should work with the Department of Transportation, local proponents for preserving the bridge, and local government officials to identify some means of saving the bridge.

A five-minute break was taken.

J. R. Rice Barn, Route 4, Pratt vicinity, Pratt County

(Motion--McKenna)

(Second--Groneman)

Mattie M. Elliot House, 600 Houston, Manhattan, Riley County

(Motion--Maley)

(Second--Major)

E. A. and Ura Wharton House, 608 Houston, Manhattan, Riley County

(Motion--Powers)

(Second--McKenna)

Herchell Crainer left the meeting at this time.

Santa Fe Trail Multiple Property National Register Cover Nomination, Kansas

(Motion--Groneman)

(Second--Powers)

Martha presented slides of the recently relocated Funston House. National Park Service regulations state that a building is automatically delisted when it is moved unless the new location was reviewed and approved in advance by the state review board and

Page 3

the National Register office. The board will need to review state register status of the property at a later meeting.

Ramon presented plaques to past board members J. Eric Engstrom and Sara Ullmann for their years of service and dedication to the board. (A luncheon was held in their honor following the board meeting.)

The time and place for the next board meeting was discussed. Topeka will probably be the location and November 5 or 19 will be probable dates. Board members will be polled on their availability.

Judith Major requested and was given board consensus to appoint a grants review committee for the next round of Heritage Trust Fund grants.

The meeting was adjourned at 12:15 p.m.

KANSAS HISTORIC SITES BOARD OF REVIEW

Policy for Speakers Addressing the Board

Persons from the audience wishing to address the Kansas Historic Sites Board of Review concerning the eligibility of a property proposed for national register/state register nomination or on another matter for which the board is accepting public comments shall each be allocated up to five minutes by the chair to make a statement to the board unless the board votes unanimously to waive the time limit. Questions that board members may ask of the speaker and subsequent responses do not count against the allotted time.

Remarks made to the board should be limited to the issue(s) before the board. For example, for national register/state register nominations, the issue is whether or not the property under consideration meets the national or state register criteria.

The presiding officer shall determine the relevance of remarks to the subject and will rule extraneous comments and discussions to be out of order. The chair's decisions are not appealable by members of the audience.

(Adopted 8-20-94)

BD-SPEAK

ATTENDANCE SHEET

(Please Print)

NAME

ADDRESS

1. Linda Glasgow 2236 Snowbird Dr. Manhattan
2. Diana Hatch 715 Houston St. Manhattan
3. MICHAEL HATCH "
4. DAVE McCLUNE Box 194 ST. PAUL, KS,
5. Eric Engstrom Michigan
6. Vivian E. Sweet Adm. Jones
7. J. L. Anderson Lawrence, KS
8. Peter C. Houston 210 N. 6th St. Baldwin City, KS.
66044
9. DAVID BALMAN Box 176 Rozel, KS
10. Sara Ulman Box 700 Olathe KS 66051
11. _____
12. _____
13. _____
14. _____
15. _____

ATTENDANCE SHEET

(Please Print)

NAME

ADDRESS

1. Howard, Linda, Amanda Grossman 1115 Phillips Salina, KS
2. Dupe West 1014 Houston, Manhattan, KS.
3. Lon West " " " "
4. Dale Newton 3224 SW Lane Topeka, KS.
5. Arthur + Mary Anderson + Alex 837 Avalon Rd. Lawrence, KS.
6. Olive Stanford 819 Avalon Rd " "
7. Warren L. Juck X.P.O.T.
Docking State office Building Topeka
8. Mary Ellis 600 Houston, Manhattan, KS
9. Breta Bloomberg-Ellis 600 Houston, Manhattan, KS
10. Lulu M^o Manis 608 Houston Manhattan, KS.
11. J L L 7305 Hillview Drive PLANO TX
12. John Stoney 1484 Wilcox Creek R. Manhattan KS
13. Mary Stoney 3312 Frontier Cir " "
14. Virginia Byler 1616 Virginia Dr " "
15. Kear Byler Hill 613 Houston Manhattan, KS.

DATE August 20, 1994

REVIEW BOARD TALLY SHEET

Property NHRA (SRCA) Drag Strip, Great Bend Expo Area, West 10th St., Great Bend, Barton CountyMotion by Jeanne McKenna to APPROVE DISAPPROVE TABLESeconded by Dave DeBusman

NAME	YES	NO	ABSTAIN
Thomas B. Barr	✓		
Herchel Crainer		✓	
J. David DeBusman	✓		
Thomas Groneman	✓		
Jeanne McKenna	✓		
Judith Major	✓		
Mary Maley		✓	
Ramon Powers	✓		
Mark Sheeks	✓		
Thomas A. Witty	✓		
Cooper C. Woodring	✓		

Disposition

APPROVED

DISAPPROVED

TABLED

If disapproved, reasons were: Letter of support fromcity

DATE August 20, 1994

REVIEW BOARD TALLY SHEET

Property (Old) English Lutheran Church, 1040 New Hampshire, Lawrence, Douglas CountyMotion by Herschell Crainer to APPROVE DISAPPROVE TABLESeconded by Mary Maley

NAME	YES	NO	ABSTAIN
Thomas B. Barr			
Herschell Crainer			
J. David DeBusman			
Thomas Groneman			
Jeanne McKenna			
Judith Major			
Mary Maley			
Ramon Powers			
Mark Sheeks			
Thomas A. Witty			
Cooper C. Woodring			

Disposition

APPROVED

DISAPPROVED

TABLED

If disapproved, reasons were: _____

Arthur Anderson - owners -

City of Lawrence - letter of support

DATE August 20, 1994

REVIEW BOARD TALLY SHEET

Property William A. Quayle House, 210 N. 6th, Baldwin, Douglas CountyMotion by Judith Major to APPROVE DISAPPROVE TABLESeconded by Ramon Powers

NAME	YES	NO	ABSTAIN
Thomas B. Barr			
Herchel Crainer			
J. David DeBusman			
Thomas Groneman			
Jeanne McKenna			
Judith Major			
Mary Maley			
Ramon Powers			
Mark Sheeks			
Thomas A. Witty			
Cooper C. Woodring			

Disposition

APPROVED

DISAPPROVED

TABLED

If disapproved, reasons were: _____

DATE August 20, 1994

REVIEW BOARD TALLY SHEET

Property Elk River Marsh Arch Bridge, US-75, Independence, Montgomery County

Motion by _____ to APPROVE DISAPPROVE TABLE

Seconded by _____

NAME	YES	NO	ABSTAIN
Thomas B. Barr			
Herchel Crainer			
J. David DeBusman			
Thomas Groneman			
Jeanne McKenna			
Judith Major			
Mary Maley			
Ramon Powers			
Mark Sheeks			
Thomas A. Witty			
Cooper C. Woodring			

Disposition

APPROVED

DISAPPROVED

TABLED

If disapproved, reasons were: _____

Warren Sick - KDOT recommend structure be removed.
Vivia Sweet - support
Anderson spoke in support
Dave McClure - Contractor would delay.

DATE August 20, 1994

REVIEW BOARD TALLY SHEET

Property J. R. Rice Barn, Route 4, Pratt vicinity, Pratt CountyMotion by Jeanne McKenna to APPROVE DISAPPROVE TABLESeconded by Tom Groneman

NAME	YES	NO	ABSTAIN
Thomas B. Barr			
Herchel Crainer			
J. David DeBusman			
Thomas Groneman			
Jeanne McKenna			
Judith Major			
Mary Maley			
Ramon Powers			
Mark Sheeks			
Thomas A. Witty			
Cooper C. Woodring			

Disposition

APPROVED

DISAPPROVED

TABLED

If disapproved, reasons were: _____

DATE August 20, 1994

REVIEW BOARD TALLY SHEET

Property Mattie M. Elliot House, 600 Houston, Manhattan, Riley CountyMotion by Mary Maley to APPROVE DISAPPROVE TABLESeconded by Judith Major

NAME	YES	NO	ABSTAIN
Thomas B. Barr			
Herchel Crainer			
J. David DeBusman			
Thomas Groneman			
Jeanne McKenna			
Judith Major			
Mary Maley			
Ramon Powers			
Mark Sheeks			
Thomas A. Witty			
Cooper C. Woodring			

Disposition

APPROVED

DISAPPROVED

TABLED

If disapproved, reasons were:

Breta Bloomberg - Ellis - support
Mary Ellis - support

DATE August 20, 1994

REVIEW BOARD TALLY SHEET

Property E. A. and Ura Wharton House, 608 Houston, Manhattan, Riley CountyMotion by Ramon Powers to APPROVE DISAPPROVE TABLESeconded by Jeanne McKenna

NAME	YES	NO	ABSTAIN
Thomas B. Barr			
Herchel Crainer			
J. David DeBusman			
Thomas Groneman			
Jeanne McKenna			
Judith Major			
Mary Maley			
Ramon Powers			
Mark Sheeks			
Thomas A. Witty			
Cooper C. Woodring			

Disposition

APPROVED

DISAPPROVED

TABLED

~~If disapproved, reasons were:~~Helen McManus - owner - support

DATE August 20, 1994

REVIEW BOARD TALLY SHEET

Property Santa Fe Trail Multiple Property National Register Cover Nomination, KansasMotion by Tom Groneman to APPROVE DISAPPROVE TABLESeconded by Ramon Powers

NAME	YES	NO	ABSTAIN
Thomas B. Barr	1		
Herchel Crainer			
J. David DeBusman			
Thomas Groneman			
Jeanne McKenna			
Judith Major			
Mary Maley			
Ramon Powers			
Mark Sheeks			
Thomas A. Witty			
Cooper C. Woodring			

Disposition

APPROVED

DISAPPROVED

TABLED

If disapproved, reasons were: _____

ELK RIVER RAINBOW BRIDGE

Estimated Monthly Expenses

4-Lighting Poles	
K.G.&E.	60.00
Trash Pick-Up	
Sunset Disposal	7.00
Monthly Lawn Care	
Hart's Lawn Service	215.00
Liability Insurance	
City Never Estimated	-0-
TOTAL	<hr/> \$282.00

Estimated One-Time Expense

6-Garbage Barrels	
Persky's Iron	4.00 @
	24.00
100-55 gal. Trash Bags	
Vestal Equip. & Supply	20.00
1,000 ft-Guard Rail	
Wellborn Sales Dennis Brown-Dist Rep.	2450.00
Bi-Annual Safety Inspection Report	
Kirkham, Micheal & Associates	150.00
6-Concrete Round Tables w/Benches	
Independence Nursery	245.00 @
	1470.00
4-Concrete Grecian Urns	
Independence Nursery	98.00 @
	392.00
Delivery & Set-Up of Tables w/Benches	
Independence Nursery	200.00
12 gal. Assorted Flowers & Shrubs	
Independence Nursery	405.00
Planting Flower Beds	
Independence Nursery	80.00
2-History Signs	
Rice Sign Shop	240.00 @
	480.00
2-Making of the Park Signs	
Rice Sign Shop	200.00 @
	400.00
4-Concrete Enclosures	
Beachner Construction	FREE
2-44' to 48' ft Parking Lots w/Asphalt	
Bechner Construction	FREE

1-Culvert Under Access Road	
Beachner Construction	FREE
2-Access Roads	
Beachner Construction	FREE
1-Estimate to Examine Damaged Weep Holes	
2nd Life Restoration	FREE
	<hr/>
TOTAL	\$6071.00

BEACHNER CONSTRUCTION OFFERED A CHECK FOR \$6500.00



City of Lawrence KANSAS

MIKE WILDGEN, CITY MANAGER

CITY OFFICES

BOX 708

86644-0708

8 EAST 9th

913-832-3000

TDD 913-832-3209

FAX 913-832-3405

CITY COMMISSION

MAYOR

JOHN NALBANDIAN

COMMISSIONERS

JOLENE ANDERSEN

DOUG COMPTON

BOB MOODY

ROBERT C. SCHULTE

19 August 1994

Martha Hagedorn-Krass
Architectural Historian
Kansas State Historic Preservation Office
120 W. 10th Street
Topeka, KS 66612-1291

RE: NATIONAL REGISTER NOMINATION OF ENGLISH LUTHERAN CHURCH, 1040 NEW HAMPSHIRE, LAWRENCE, KS.

Dear Martha:

The Lawrence Historic Resources Commission reviewed this nomination application in accordance the National Register criteria B & C at their meeting on July 21st, 1994. The Commission voted unanimously to support this nomination.

The Commission discussed the architectural integrity of the building; its representation of vernacular architecture for churches designed during a set period of time in Lawrence; the connection this property has with the locally prominent architect, John G. Haskell; and the building's status as an 'icon' in the community. The quality and care taken to restore the structure was also found to be noteworthy. The fact that this building & owner were awarded a Kansas Preservation Award was also discussed and found to be significant.

HABS drawings exist on this building and the architects on the Commission felt it was important to mention these as they were not included in the packet of information sent by the State to the Commission.

This is the extent of the HRC's comments on the nomination application. Minutes of this meeting have not been written but will be forwarded upon their receipt by staff.

Sincerely,

Linda M. Finger

Historic Resources Administrator

c. Arthur Anderson

We are committed to providing excellent city services that enhance the quality of life for the Lawrence community



THE CITY OF



GREAT BEND

P.O. BOX 1168

GREAT BEND, KANSAS 67530

FAX
(316) 793-4108

CITY CLERK
1209 Williams
Box 1168
(316) 793-4100

ADMINISTRATION
1209 Williams
Box 1168
(316) 793-4111

ENGINEERING
1209 Williams
Box 1168
(316) 793-4106

INSPECTION
1205 Williams
Box 1168
(316) 793-4108

STREET
525 Morton
Box 1168
(316) 793-4150

WATER POLLUTION
CONTROL
200 Klowa Rd.
Box 1168
(316) 793-4170

PARKS - ZOO
CEMETERY
Brit Spaugh Park
Box 215
(316) 793-4160

FIRE - AMBULANCE
1205 Williams
Box 1168
(316) 793-4140

POLICE
1217 Williams
Box 1168
(316) 793-4120

August 17, 1994


Mr. Ramon Powers
State Historic Presentation Officer
Kansas State Historical Society
120 West Tenth
Topeka, Kansas 66612-1291

Dear Mr. Powers:

The Great Bend City Council voted unanimously to support the NHRA Drag Strip, Great Bend Expo Area, West 10th Street, Great Bend, Kansas as being listed on the Register of Historic Kansas Places by the Kansas Historic Sites Board of Review.

We thank you for your consideration of this important issue and the designation thereof.

Sincerely,


Howard D. Partington
City Administrator

HDP:br

enc

RECEIVED
AUG 18 1994
Kansas Historic Preservation Dept.

DRAFT

KANSAS HISTORIC SITES BOARD OF REVIEW

Policy for Speakers Addressing the Board

Persons from the audience wishing to address the Kansas Historic Sites Board of Review concerning the eligibility of a property proposed for national register/state register nomination or on another matter for which the board is accepting public comments shall each be allocated up to five minutes by the chair to make a statement to the board unless the board votes unanimously to waive the time limit. Questions that board members may ask of the speaker and subsequent responses do not count against the allotted time.

Remarks made to the board ^{should} shall be limited to the issue(s) before the board. For example, for national register/state register nominations, the issue is whether or not the property under consideration meets the national or state register criteria.

The presiding officer shall determine the relevance of remarks to the subject and will rule extraneous comments and discussions to be out of order. The chair's decisions are not appealable by members of the audience.

BD-SPEAK

8-5-94



City of Lawrence KANSAS

MIKE WILDGEN, CITY MANAGER

CITY OFFICES

BOX 708

86644-0708

8 EAST 6th

913-832-3000

TDD 913-832-3205

FAX 913-832-3405

CITY COMMISSION

MAYOR

JOHN NALBANDIAN

COMMISSIONERS

JOLENE ANDERSEN

DOUG COMPTON

BOB MOODY

ROBERT C. SCHULTE

19 August 1994

Martha Hagedorn-Krass
Architectural Historian
Kansas State Historic Preservation Office
120 W. 10th Street
Topeka, KS 66612-1291

RE: NATIONAL REGISTER NOMINATION OF ENGLISH LUTHERAN CHURCH, 1040 NEW HAMPSHIRE, LAWRENCE, KS.

Dear Martha:

The Lawrence Historic Resources Commission reviewed this nomination application in accordance the National Register criteria B & C at their meeting on July 21st, 1994. The Commission voted unanimously to support this nomination.

The Commission discussed the architectural integrity of the building; its representation of vernacular architecture for churches designed during a set period of time in Lawrence; the connection this property has with the locally prominent architect, John G. Haskell; and the building's status as an 'icon' in the community. The quality and care taken to restore the structure was also found to be noteworthy. The fact that this building & owner were awarded a Kansas Preservation Award was also discussed and found to be significant.

HABS drawings exist on this building and the architects on the Commission felt it was important to mention these as they were not included in the packet of information sent by the State to the Commission.

This is the extent of the HRC's comments on the nomination application. Minutes of this meeting have not been written but will be forwarded upon their receipt by staff.

Sincerely,

Linda M. Finger

Historic Resources Administrator

c. Arthur Anderson

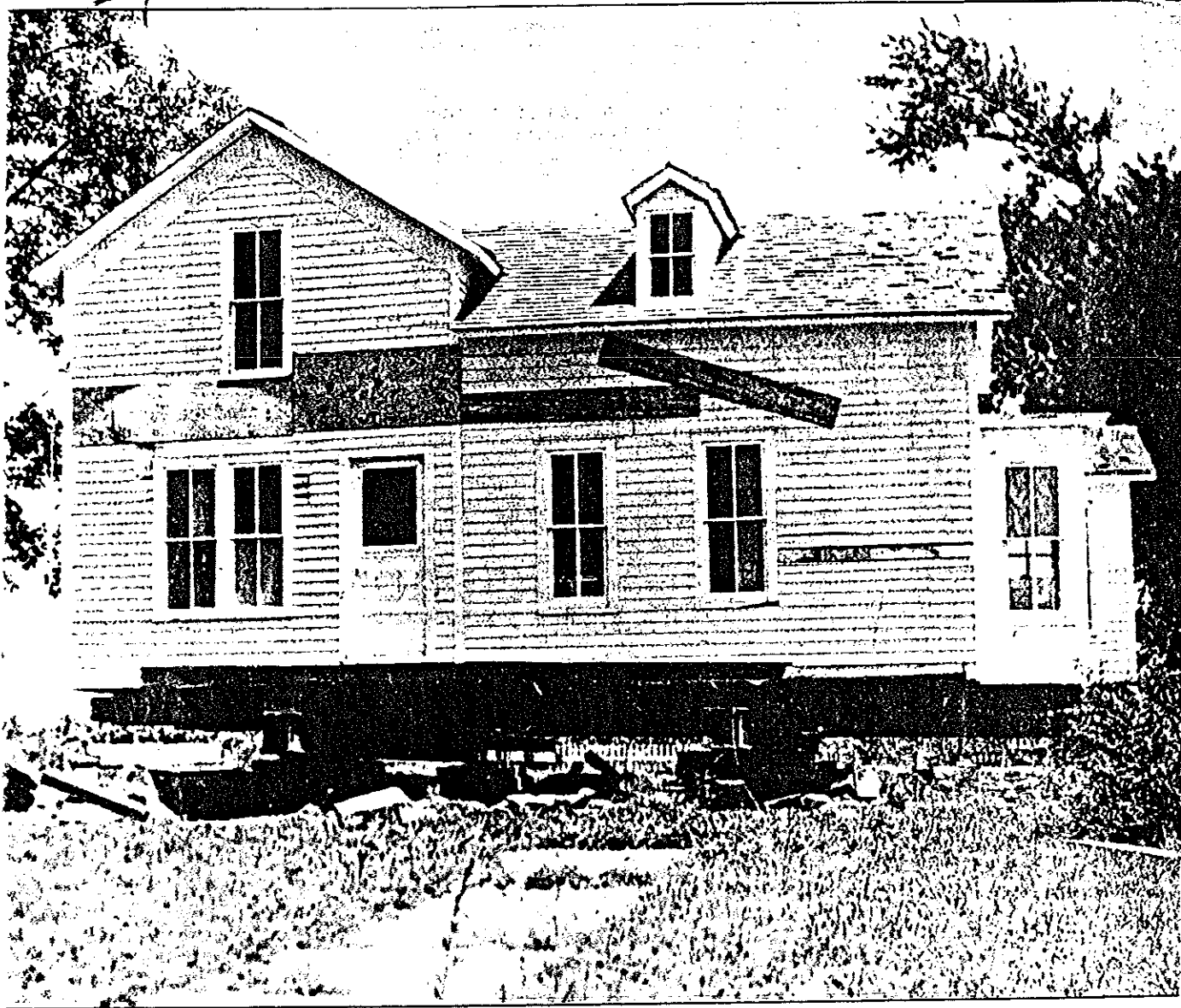
We are committed to providing excellent city services that enhance the quality of life for the Lawrence community



Kansas Press Assn., Inc.
5423 SW 7th Street
Topeka, Kansas 66606-2330

KANSAS
Topeka Register
D. 4-473

JUL 23 1991



Register/Bob Johns

Ready to roll

The Gen. Fred Funston boyhood home is all jacked up and nearly ready to start its trek into Topeka Thursday of next week. The house, more than a century old, will be relocated on the west side of the downtown square in an area left vacant by fire a few years ago.

The Allen County Historical Society will use \$100,000 in private donations and \$24,500 from state lottery revenues to refit the house as a downtown tourist attraction.

Kansas Historic Sites Board of Review
November 5, 1994
Kansas Museum of History, Topeka, KS

The meeting was called to order at 9:00 a.m. by the chair Judith Major. Other board members present were Tom Barr, Terry J. Clark, Herchel Crainer, Tom Groneman, Jeanne McKenna, Ramon Powers, Mark Sheeks, Tom Witty, and Cooper Woodring. Board member J. David DeBusman was absent. Staff members of the Historic Preservation Office (HPO) present were Dick Pankratz, Sandy McDaniel, Desmond Anyanwu, Martha Hagedorn-Krass, Larry Jochims, Carl Magnuson, Kim Rivera, and Courtney Swann. Interested members of the public were also in attendance.

Judith welcomed new board member Terry J. Clark from Kansas City, Kansas. After informing the audience of the process the board uses for the consideration of nominations, she asked members and staff to identify themselves for the audience.

Herchel Crainer moved to accept the minutes of the August 20, 1994, board meeting with one correction--to spell his first name correctly. Ramon Powers seconded the motion and it carried.

An update on preservation activities since the August board meeting was next on the agenda. Courtney Swann presented slides of the completed Heritage Trust Fund projects: the Condon Bank in Coffeyville, the Santa Fe Depot in Madison, the Morgan House in Peabody, and the Riverside Cottage in Wichita.

Ramon Powers updated the board on various controversial issues. The city of Wichita owns the Allis Hotel and wants to demolish it. Ramon, in his capacity as state historic preservation officer, wrote to the city discouraging the demolition. The city will consider all alternatives to demolition. Saving the building would require financial support from the city, and the outlook for saving it is not good. The Sedgwick County Commission wants to relocate the Calvary Baptist Church in Wichita, which is on the national register, in order to accommodate proposed jail expansion that would encroach upon the church. Also, an adverse effect letter was sent to the City of Manhattan regarding the proposed expansion of the library and the parking lot because of its proximity to the national register properties on Houston Street. The Menninger Office Park to be located near the Kansas Museum of History was cleared, but Ramon has some concerns regarding the impact the project will have on the museum grounds. He stated that the Potawatomi Mission renovation project should be completed by January, and the new Center for Historical Research around May or June.

Dick Pankratz reported that the state historic preservation conference was held in Wichita on September 16-17. From all indications it was a successful conference. The Historic Preservation Office staff will once again assist the Kansas Department of Transportation in evaluating the Intermodal Surface Transportation Efficiency Act applications in the historic category.

Judith Major presented the report of the grants review committee on the allocation of federal Historic Preservation Funds for fiscal year 1995. The other committee member was J. David DeBusman. That report is attached to these minutes. Since the office had not received official notification of its federal appropriation at the time the report was prepared, the grants review committee ranked the applications according to the stated criteria. A minimum of ten per cent of the gross federal appropriation is reserved for Certified Local Governments (CLG). A motion was made by Jeanne McKenna to approve the report submitted, Cooper Woodring seconded, and it carried.

A five minute break was taken.

Martha Hagedorn-Krass then presented nominations to the board for consideration to the national and state register. All nominations were unanimously accepted unless otherwise indicated.

NATIONAL REGISTER

Schleicher's Branch Stone Arch Bridge, Humboldt vicinity, Allen County
(Motion--Sheeks) (Second--Woodring)

Jensen-Dahl House, East Main St., Denmark, Republic County

Staff recommended the building be nominated for state register instead of national register because of the issue of integrity and tuckpointing with portland cement. Motion for state register nomination was made by Crainer, seconded by Woodring, and it carried.

Hillsdale State Bank, Church and Frisco Sts., Hillsdale, Miami County

Staff recommended the building be nominated for state register instead of national register because the two additions added to the structure after the nomination was received and without prior staff knowledge detracted from the integrity of the building. A motion to approve the nomination was made by McKenna, seconded by Powers. After discussion the motion was unanimously voted down.

Elk River Marsh Arch Bridge, US-75, Independence, Montgomery County

There was much discussion on whether to table the nomination or not because the issue of ownership had not yet been resolved. A motion was made by McKenna and seconded by Witty to table the nomination until the February board meeting, and at that time make the final decision on the nomination of the bridge. The motion carried by a vote of six to four.

A five minute break was taken.

Page 3

Engine House No. 6, 1300 S. Broadway, Wichita, Sedgwick County
(Motion--Crainer) (Second--Clark)

John Sargent House, 225 SW Clay, Topeka, Shawnee County
(Motion--McKenna) (Second--Woodring)

Lake of the Forest Club House, Lake of the Forest, Bonner Springs, Wyandotte County
(Motion--Groneman) (Second--Major)

The time and place of the next meeting was discussed. The meeting will be held in February. Post cards will be mailed for board members to check their preference of dates.

Representatives of Sedgwick County presented an informational proposal to the board to relocate the Calvary Baptist Church in Wichita because the county needs to expand its jail facility. The county asked for a special meeting of the board in January to decide if the new location would be acceptable for retaining the building on the National Register of Historic Places. A special meeting of the board will depend on whether or not the local preservation commission in Wichita responds favorably to the proposal.

The meeting was adjourned at 12:50 p.m.

REPORT OF THE GRANTS REVIEW COMMITTEE TO THE KANSAS HISTORIC SITES BOARD OF REVIEW, OCTOBER 21, 1994

The grants review committee, which was composed of Judith Major and myself, J. David DeBusman, met with staff of the Historic Preservation Office to discuss the eligible applications for the Historic Preservation Fund grants for fiscal year 1995. They were as follows:

City of Lawrence (CLG), \$13,842.00, North Lawrence Survey and Land Use Guidelines

City of Lawrence (CLG), \$18,340.00, 1996 Kansas Statewide Historic Preservation Conference

City of Salina (CLG), \$3,000.00, Update of 1983 Salina Heritage Conservation Plan

City of Wichita (CLG), \$15,000.00, Dunbar Intensive Survey

City of White Cloud, \$2,700.00, White Cloud Historic District Nomination

Dickinson County Historical Society, \$2,304.00, Statewide Preservation Conference

Finney County Historical Society, \$20,845.00, Garden City Survey IV

Johnson County Museum System, \$16,290.00, Johnson County Survey V

Museum of Anthropology, University of Kansas, \$18,565.00, Archeological Survey of Five Creek

Museum of Anthropology, University of Kansas, \$10,494.00, Douglas County Archeological Survey

The Kansas Preservation Office has not yet received official notification of its federal appropriation. The Grants Review Committee, therefore, ranked the applications according to the stated criteria. When we learn what resources are available, the projects will be funded in descending order as far as finances will allow. A minimum of ten per cent of the gross federal appropriation is reserved for CLG projects.

The committee first evaluated the CLG applications as a group and ranked them according to their satisfaction of program objectives. The applications were ranked in the following order:

City of Lawrence, Statewide Preservation Conference

City of Lawrence, North Lawrence Survey

City of Salina, Update of 1983 Conservation Plan

City of Wichita, Dunbar Intensive Survey

The committee then ranked the non-CLG applications as follows:

Johnson County Museum System, Johnson County Survey V
Finney County Historical Society, Garden City Survey

City of White Cloud, Historic District Nomination
University of Kansas, Douglas County Archaeological Plan
University of Kansas, Archeological Survey of Five Creek
Dickinson County Historical Society, Statewide Preservation Conference

Using the lowest estimated federal appropriation as a guide, the following projects were recommended for funding:

City of Lawrence, Statewide Preservation Conference
City of Lawrence, North Lawrence Survey
City of Salina, Update of 1983 Conservation Plan
Johnson County Museum System, Johnson County Survey V
Finney County Historical Society, Garden City Survey
City of White Cloud, Historic District Nomination
University of Kansas, Douglas County Archaeological Plan

Any additional funds that the Kansas State Historic Preservation Office may receive past our lowest estimate will be assigned to projects in descending order based upon their overall ranking and the requirement related to the minimum award of grants to CLGs.

This report is submitted to the Kansas Historic Sites Board of Review by the Grants Review Committee.

J. David DeBusman

Judith Major

DATE Nov. 5, 1994

REVIEW BOARD TALLY SHEET

Property Schleicher's Branch Stone Arch Bridge, Humboldt vicinity, Allen CountyMotion by Mark Sheeks to APPROVE DISAPPROVE TABLESeconded by Cooper Woodring

NAME	YES	NO	ABSTAIN
Thomas B. Barr	1		
Herchel Crainer			
J. David DeBusman <i>absent</i>			
Thomas Groneman	1		
Jeanne McKenna			
Judith Major			
Mary Maley <i>TERRY S CLARK</i>			
Ramon Powers			
Mark Sheeks			
Thomas A. Witty			
Cooper C. Woodring			

Disposition

APPROVED

DISAPPROVED

TABLED

If disapproved, reasons were: _____

_____*Charles Rayl - Ottawa - proponent*

*State*DATE Nov. 5, 1994

REVIEW BOARD TALLY SHEET

Property Jensen-Dahl House, East Main St, Denmark, Republic CountyMotion by Herchel Crainer to APPROVE DISAPPROVE TABLESeconded by Cooper Woodring

NAME	YES	NO	ABSTAIN
Thomas B. Barr			
Herchel Crainer			
J. David DeBusman <i>absent</i>			
Thomas Groneman			
Jeanne McKenna			
Judith Major			
Mary Moley <i>TERRY J. CLARK</i>			
Ramon Powers			
Mark Sheeks			
Thomas A. Witty			
Cooper C. Woodring			

Disposition

APPROVED

DISAPPROVED

TABLED

If disapproved, reasons were: _____

integrity not + tuckpointing with portland cement

State

DATE Nov. 5, 1994

REVIEW BOARD TALLY SHEET

Property Hillsdale State Bank, Church and Frisco Sts., Hillsdale, Miami County

Motion by Jeanne to APPROVE DISAPPROVE TABLE

Seconded by Ramon

NAME	YES	NO	ABSTAIN
Thomas B. Barr			
Herchel Crainer			
J. David DeBusman	<i>absent</i>		
Thomas Groneman			
Jeanne McKenna			
Judith Major			
Mary Maley <u>TERRY J. CLARK</u>			
Ramon Powers			
Mark Sheeks			
Thomas A. Witty			
Cooper C. Woodring		X	

Disposition

APPROVED

DISAPPROVED

TABLED

If disapproved, reasons were: _____

Staff amendment is for State register now based on additions after nomination was received by HPO staff.

DATE Nov. 5, 1994

REVIEW BOARD TALLY SHEET

Property Elk River Marsh Arch Bridge, US-75, Independence, Montgomery County

Motion by _____ to APPROVE DISAPPROVE TABLE

Seconded by _____

NAME	YES	NO	ABSTAIN
Thomas B. Barr	✓		
Herchel Crainer		✓	
J. David DeBusman <i>absent</i>			
Thomas Groneman		✓	
Jeanne McKenna	✓		
Judith Major	✓		
Mary Maley <i>TERRY S. CLARK</i>		✓	
Ramon Powers	✓		
Mark Sheeks	✓		
Thomas A. Witty	✓		
Cooper C. Woodring		✓	

Disposition

APPROVED

DISAPPROVED

TABLED

If disapproved, reasons were: _____

Visia Sweet proponent
Dave Comstock - KDOT

DATE Nov. 5, 1994

REVIEW BOARD TALLY SHEET

Property Engine House No. 6, 1300 S. Broadway, Wichita, Sedgwick CountyMotion by Herchel Crainer to APPROVE DISAPPROVE TABLESeconded by Jerry Clark

NAME	YES	NO	ABSTAIN
Thomas B. Barr	/		
Herchel Crainer			
J. David DeBusman <i>absent</i>			
Thomas Groneman	/		
Jeanne McKenna	/		
Judith Major	/		
Mary Maley <i>TERRY J. CLARK</i>	/		
Ramon Powers	/		
Mark Sheeks	/		
Thomas A. Witty	/		
Cooper C. Woodring	/		

Disposition

APPROVED

DISAPPROVED

TABLED

If disapproved, reasons were: _____

Dale Churchman - Wichita - proponent

DATE Nov. 5, 1994

REVIEW BOARD TALLY SHEET

Property John Sargent House, 225 SW Clay, Topeka, Shawnee CountyMotion by Jeanne McKenna to APPROVE DISAPPROVE TABLESeconded by Cooper Woodring

NAME	YES	NO	ABSTAIN
Thomas B. Barr	1		
Herchel Crainer			
J. David DeBusman <i>absent.</i>			
Thomas Groneman			
Jeanne McKenna			
Judith Major			
Mary Maley <i>TERRY J. CLARK</i>			
Ramon Powers			
Mark Sheeks			
Thomas A. Witty			
Cooper C. Woodring			

Disposition

APPROVED

DISAPPROVED

TABLED

If disapproved, reasons were: _____

DATE Nov. 5, 1994

REVIEW BOARD TALLY SHEET

Property Lake of the Forest Club House, Lake of the Forest, Bonner Springs,Motion by Tom Groneman to APPROVE DISAPPROVE TABLE Wyandotte, CountySeconded by Judith Major

NAME	YES	NO	ABSTAIN
Thomas B. Barr	1		
Herchel Crainer			
J. David DeBusman <i>absent</i>			
Thomas Groneman	1		
Jeanne McKenna			
Judith Major			
Mary Maley <i>TERRY J. CLARK</i>			
Ramon Powers			
Mark Sheeks			
Thomas A. Witty			
Cooper C. Woodring			

Disposition

APPROVED

DISAPPROVED

TABLED

If disapproved, reasons were: _____

Karen Hodson - resident - Lake of the Forest - proponent

ATTENDANCE SHEET

(Please Print)

	NAME	ADDRESS
1.	Jane Windschappel Zach &	1100 SW Belle Avenue 2020 Potomac Dr.
2.	Anna Ramirez Maureen	Topeka, Ks. 66611
3.	Vivian B. West	Jadep. KS 67301
4.	Carolyn Kestel	Jadep. KS 67301
5.	Alan Shuill	225 S. W. L. Jay Topeka
	DE JOHNSON	8410 STONE RIDGE WICHITA. Wichita
7.	Stephanie Rose	510 N. Main Suite 502 67202
8.	William P. Buchanan	525 N Main Wichita 67202
9.	Imabelle Haupt	1006 G. Madison Wichita 67203
10.	Ruby Parker	4230 E. 25th Wichita 67220
11.	Andy Bias	525 N Main #320 Wichita 67202
12.	Roberta Shurrell	2111 N Topeka #4 Topeka 66608
13.	Michelle Rival	1629 Kentucky Lawrence 66044
14.		
15.		

ATTENDANCE SHEET

(Please Print)

NAME

ADDRESS

1. Karen Hodson Lake of the Forest
2. Helen Jensen LAKE OF THE FOREST
3. B. R. Ows 1043 S Fern Wichita Ks,
4. John Rosen 2484 Reno Road Ottawa, Ks
5. Charley & Dorothy Raehl 2460 Reno Rd, Ottawa Ks 66067
6. Betty L. Forrester Box 1100 Lake Forest Bomers Spgs, Ks 66012
7. Karen Tennant 811 Lake Forest Bomers Spgs, Ks 66012
8. Ellis E. Mc Dougall 1810 N FILLMORE
9. Dale Newton 3124 SW Lane Topeka, Ks
10. DAVID COMSTOCK KDOT - TOPEKA
11. Jenna Shirrell 3719 SE 30th Terr #104 Topeka
12. Darlene Plummer 515 Market "
13. Julane Hovorka 1624 W. 26th Topeka 66611
14. Sabara Diehl 225 Clay Topeka 66606
15. Lake Chalkin 1357 E Broadway, Wichita