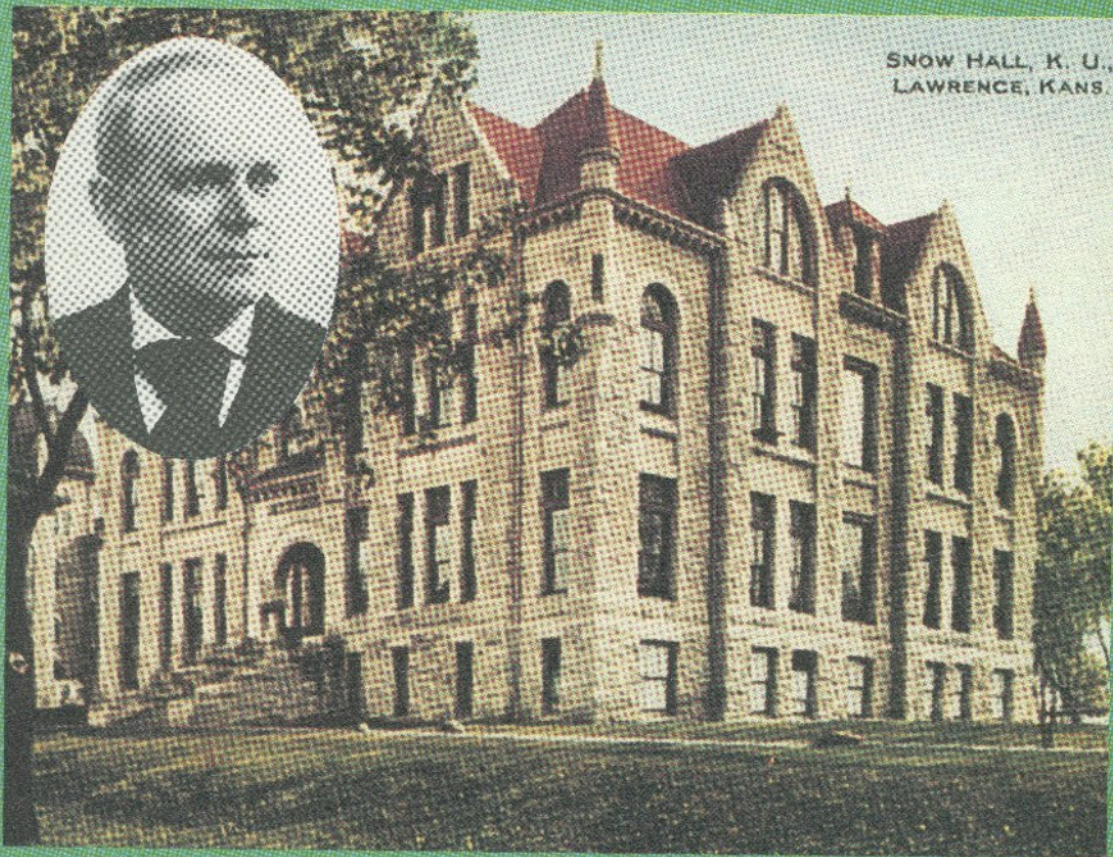


# KANSAS HISTORY

A JOURNAL OF THE CENTRAL PLAINS



SNOW HALL, K. U.,  
LAWRENCE, KANS.

Volume 1  
Number Two  
Summer 1978



# THE KANSAS STATE HISTORICAL SOCIETY

JOSEPH W. SNELL, *Executive Director*

## OFFICERS

CLIFFORD R. HOPE, JR., Garden City, *President*  
PHILIP H. LEWIS, Topeka, *Vice-President*  
SR. M. EVANGELINE THOMAS, Salina, *Second Vice-President*  
JOSEPH W. SNELL, Topeka, *Secretary*  
ROBERT W. RICHMOND, Topeka, *Treasurer*

## EXECUTIVE COMMITTEE

WILFORD RIEGLE, Emporia  
JOHN W. RIPLEY, Topeka  
JANE R. ROBISON, Dodge City  
A. BOWER SAGESER, Manhattan  
WILLIAM H. SEILER, Emporia  
HELEN L. SMITH, Colby  
FLOYD R. SOUDERS, Cheney  
ARTHUR J. STANLEY, JR., Leavenworth  
CALVIN STROWIG, Abilene

### *Ex officio members*

CLIFFORD HOPE, Garden City  
PHILIP H. LEWIS, Topeka  
SR. M. EVANGELINE THOMAS, Salina  
JOHN E. WICKMAN, Enterprise

---

The Kansas State Historical Society solicits diaries, letters, and other original records, books and pamphlets written by Kansans or about Kansas, territorial and state newspapers up to 1876, photographs, and maps and atlases of the state. The Society will also be glad to consider objects suitable for the museum, especially those having a direct connection with Kansas history.

Gifts and bequests for the furtherance of the Society's work will be gratefully received. Such remembrances, in various forms, are appropriate permanent memorials to the interests of an individual or a group. A representative of the Society will be glad to consult with anyone wishing to make a gift or to establish a bequest or endowment. Address the Executive Director, KANSAS STATE HISTORICAL SOCIETY, 120 W. Tenth St., Topeka, Kan. 66612.

---

## THE COVER

Snow Hall of Natural History completed in 1886 at the University of Kansas, Lawrence. It served the natural science departments of the university over 40 years until being replaced by a new Snow Hall which was completed in 1930. *Inset*, Francis H. Snow (1840-1908) for whom the building was named. For more information on Snow and for his diaries, 1903-1907, see pp. 101-132. Photographs *courtesy* of Watkins Community Museum, Lawrence.

# KANSAS HISTORY

A JOURNAL OF THE CENTRAL PLAINS

Volume 1

Summer, 1978

Number 2

Published by

THE KANSAS STATE  
HISTORICAL SOCIETY

Forrest R. Blackburn,  
*Managing Editor*

Joseph W. Snell,  
*Executive Director*

Dot E. Taylor,  
*Assistant Editor*

---

## CONTENTS

	PAGE
THE <i>APPEAL TO REASON</i> AND AMERICAN SOCIALISM, 1901-1920 . . . . . <i>David Paul Nord</i>	75
THE ORIGINAL MILITARY POST ROAD BETWEEN FORT LEAVENWORTH AND FORT SCOTT . . . . . <i>Eloise Frisbie Robbins</i>	90
THE DIARIES OF FRANCIS H. SNOW . . . . . <i>Edited by John M. Peterson</i>	101
BYPATHS OF KANSAS HISTORY . . . . .	133
KANSAS HISTORY OFF THE PRESS . . . . .	134

---

*Kansas History*, A Journal of the Central Plains is published quarterly at 120 W. 10th St., Topeka, Kan. It is distributed without charge to members of the Kansas State Historical Society; single issues, when available, may be purchased for \$2.50 each. Membership dues are: annual \$10, sustaining \$20, patron \$100, life \$100. Membership applications and dues should be sent to Robert W. Richmond, treasurer.

Correspondence concerning articles for *Kansas History* should be addressed to the managing editor. The Society assumes no responsibility for statements made by contributors.

Second-class postage has been paid at Topeka, Kan.

ISSN:0149-9114