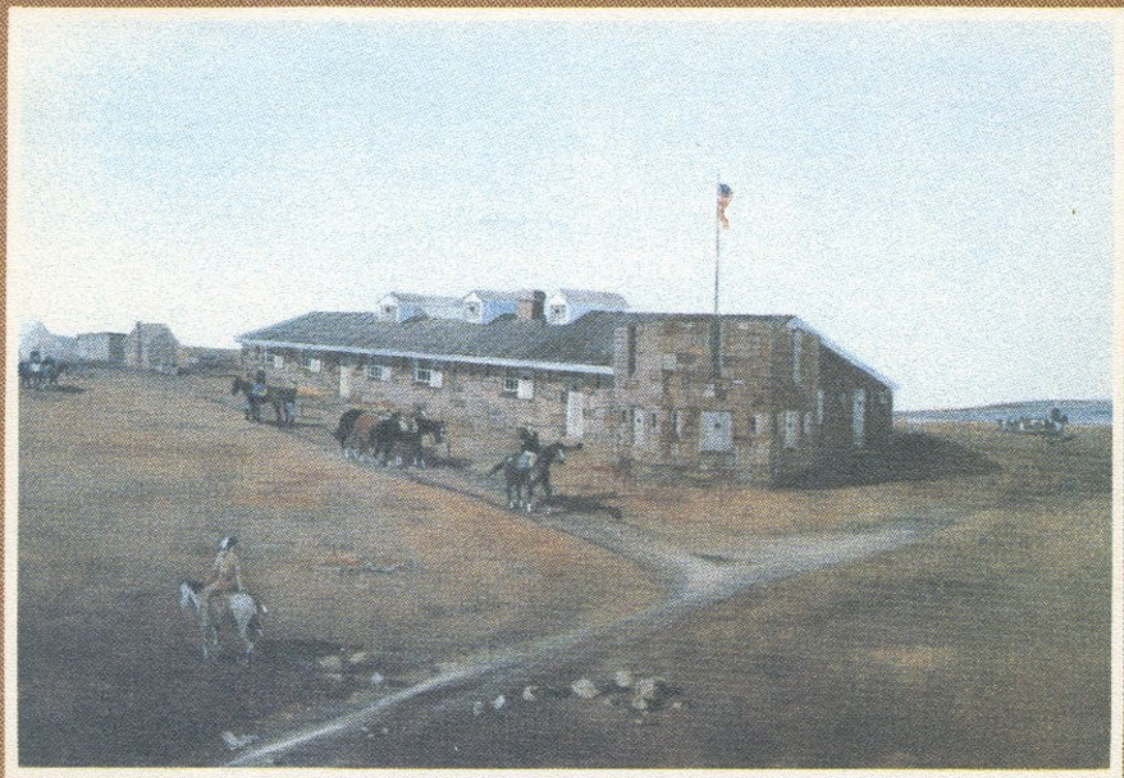


KANSAS HISTORY

A JOURNAL OF THE CENTRAL PLAINS



Volume 5
Number Four
Winter 1982



THE KANSAS STATE
HISTORICAL SOCIETY

JOSEPH W. SNELL, *Executive Director*

OFFICERS

JAMES L. FORSYTHE, Hays, *President*
JUNE WINDSCHEFFEL, Topeka, *First Vice-President*
HELEN L. SMITH, Colby, *Second Vice-President*
JOSEPH W. SNELL, Topeka, *Secretary*
ROBERT W. RICHMOND, Topeka, *Treasurer*

EXECUTIVE COMMITTEE

HARRY J. BRISCOE, Topeka
J. ERIC ENGSTROM, Wichita
CLIFFORD R. HOPE, JR., Garden City
WILFORD RIEGLE, Emporia
WILLIAM H. SEILER, Emporia
HARRIET C. SHATZELL, Hoxie
HOMER E. SOCOLOFSKY, Manhattan
FLOYD R. SOUDERS, Cheney
CALVIN STROWIG, Abilene

Ex officio members

JAMES L. FORSYTHE, Hays
JUNE WINDSCHEFFEL, Topeka
HELEN L. SMITH, Colby
DONALD R. MCCOY, Lawrence

The Kansas State Historical Society solicits diaries, letters, and other original records, books and pamphlets written by Kansans or about Kansas, territorial and state newspapers up to 1876, photographs, and maps and atlases of the state. The Society will also be glad to consider objects suitable for the museum, especially those having a direct connection with Kansas history.

Gifts and bequests for the furtherance of the Society's work will be gratefully received. Such remembrances, in various forms, are appropriate permanent memorials to the interests of an individual or a group. A representative of the Society will be glad to consult with anyone wishing to make a gift or to establish a bequest or endowment. Address the Executive Director, KANSAS STATE HISTORICAL SOCIETY, 120 W. Tenth St., Topeka, Kan. 66612.

THE COVER

Shown on the cover is Fort Zarah, which was located on the Santa Fe trail near present Great Bend at the crossing of Walnut creek and the Arkansas river. Originally established in 1864, the post was moved in late 1867 to a second site nearby, where this large stone building, with two hexagonal-shaped towers at opposite corners, was being constructed. Until the fort was abandoned in 1869, it continued to provide escorts for mail coaches and government supply trains along the trail. In order to obtain an accurate likeness of the second Fort Zarah, in the 1960's Ray S. Schulz of Great Bend obtained drawings and descriptions from official records and commissioned Hays architect and painter Richard R. Starr to paint the picture using these documents. The painting is reproduced here through the courtesy of the owner, Mr. Schulz.

KANSAS HISTORY

A JOURNAL OF THE CENTRAL PLAINS

Volume 5

Winter, 1982

Number 4

Published by

THE KANSAS STATE
HISTORICAL SOCIETY

Maxine Benson, *Editor*

Dot E. Taylor,
Associate Editor

Bobbie Pray,
Assistant Editor

CONTENTS

	PAGE
THE ORIGINS AND EARLY PROMOTION OF NICODEMUS: A Pre-Exodus, All-Black Town	<i>Kenneth Marvin Hamilton</i> 220
EARLY MUSICAL DEVELOPMENT IN WICHITA	<i>Linda L. Pohly</i> 243
THE MATTHEW CLARKSON MANUSCRIPTS	<i>edited by Rodney Staab</i> 256
BYPATHS OF KANSAS HISTORY	279
KANSAS HISTORY OFF THE PRESS	280
INDEX, VOLUME 5	285

Kansas History, A Journal of the Central Plains is published quarterly at 120 W. 10th St., Topeka, Kan. It is distributed without charge to members of the Kansas State Historical Society; single issues, when available, may be purchased for \$2.50 each. Membership dues are: annual \$10, sustaining \$20, patron \$100, life \$100. Membership applications and dues should be sent to Robert W. Richmond, treasurer.

Correspondence concerning articles for *Kansas History* should be addressed to the editor. The Society assumes no responsibility for statements made by contributors.

Second-class postage has been paid at Topeka, Kan.

Postmaster: Send address change to *Kansas History*, 120 W. 10th St., Topeka, Kan. 66612.

ISSN:0149-9114