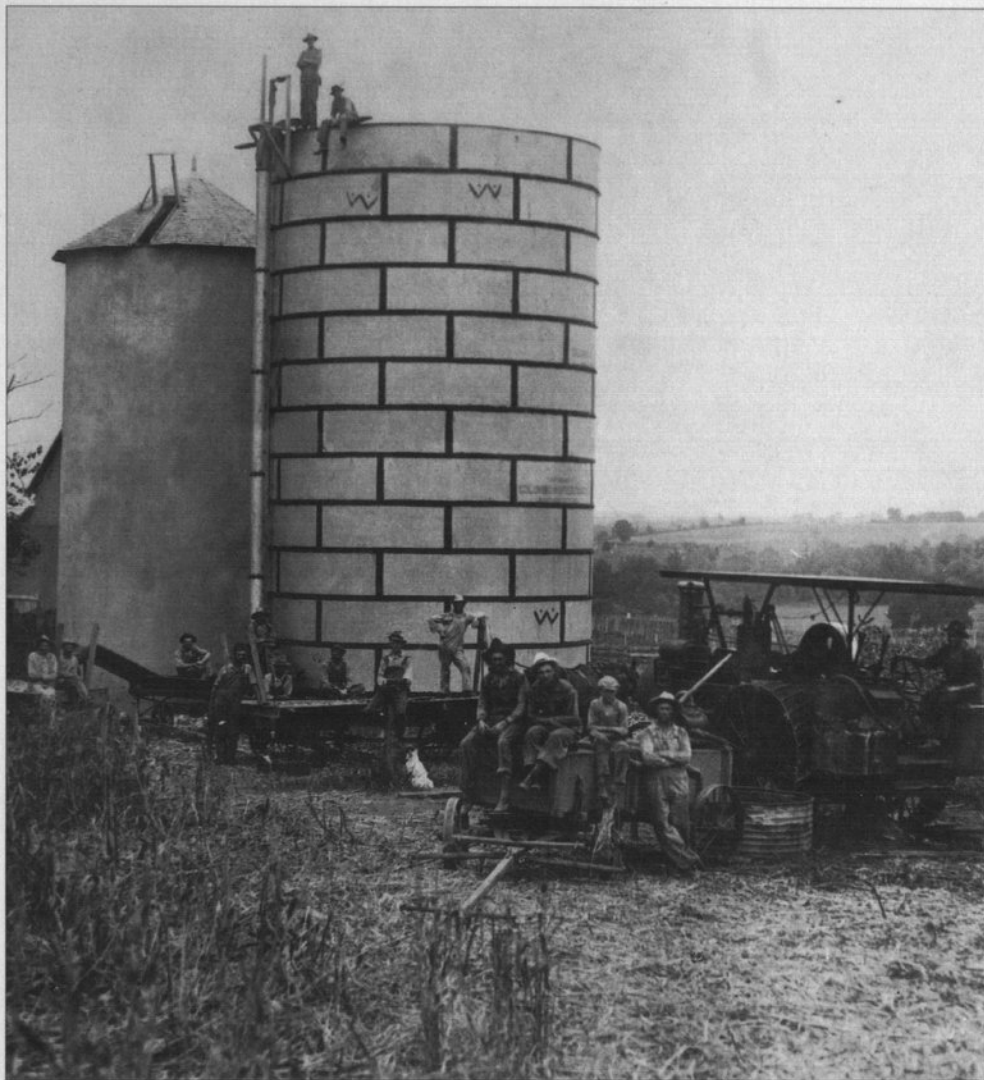


KANSAS HISTORY

A Journal
of the
Central Plains

Volume 22, Number 2
Summer 1999





Filling silo on the W. Daniels farm, Jefferson County.

Farmsteads are made up of a variety of structures, with barns and houses being perhaps the most distinctive. Depending on its characteristics, however, the silo can be a beautiful, interestingly designed, imposing edifice visible from miles around, and at one time it was a regular feature in the Kansas farm scape. Silos also were a vital part of the farm's economy, especially if the operation was one that fed a good number of livestock.

Silos, which were constructed in four basic varieties (tower, pit, trench, and bunker), came into wide use on the Plains in the late nineteenth and early twentieth centuries. Whether built of wood, brick, tile, or concrete, the round

tower or upright silo, like its less conspicuous counterparts, was filled with ensilage (chopped green corn or sorghum), which then fermented into a superior quality feed for the farmers' stock.

Filling silo, as depicted in this early twentieth-century Jefferson County photograph, usually occurred in late summer. This labor intensive job required crews comparable to the large numbers of harvest hands needed during the steam-threshing era.

This is the second in a four-part series of photographs on the inside front covers of Kansas History featuring familiar structures on the family farm.

KANSAS HISTORY

VIRGIL W. DEAN
Editor

BOBBIE A. PRAY
Managing Editor

SUSAN S. NOVAK
Associate Editor

Editorial Advisory Board

Thomas Fox Averill
James B. Boyer
Gayle R. Davis
James L. Forsythe
Thomas D. Isern
Patricia A. Michaelis
Rita G. Napier
James E. Sherow

*Ex officio Members of the
Editorial Advisory Board*
Jennie Chinn
David A. Haury
Ramon Powers

COVER: Blood-Stained
Dawn (detail) by Ernst
Ulmer, illustrating the 1863
Quantrill Raid on Lawrence.
An article on biographers'
views of William C. Quantrill
begins on page 142. BACK
COVER: Program for an early
Chautauqua on the Redpath-
Horner circuit. The 1998
Kansas State Historical Soci-
ety presidential address focuses
on the Chautauqua movement
in Kansas.

Copyright © 1999 Kansas State His-
torical Society, Inc. ISSN 0149-9114

Kansas History (USPS 290 620) is pub-
lished quarterly by the Kansas State
Historical Society, Inc., 6425 SW Sixth
Avenue, Topeka, Kansas, 66615-1099.
It is distributed without charge to
members of the Kansas State Histori-
cal Society. Membership dues are:
student \$15; individual \$25, family
\$35; organization \$25; life \$1,000. Single
issues, when available, are \$6. Peri-
odicals postage paid at Topeka,
Kansas, and additional mailing office.
Postmaster: Send address changes to
Kansas History, 6425 SW Sixth Ave-
nue, Topeka, Kansas, 66615-1099.

Printed by Allen Press, Inc.,
Lawrence, Kansas.

Volume 22

Summer 1999

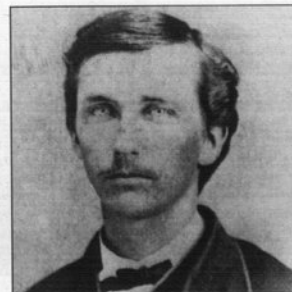
Number 2



p. 116



p. 135



p. 142

"PROUD ARE WE": PRIVATE
RHINEHART AND THE
COLLEGE COMPANY OF
THE TWENTY-SECOND
KANSAS VOLUNTEERS
by Justin Dragosani-Brantingham

100

CHAUTAUQUA:
THEN AND NOW
Presidential Address
by W. Stitt Robinson

132

A "FIEND IN HUMAN SHAPE"?
WILLIAM CLARKE QUANTRILL
AND HIS BIOGRAPHERS
by Barry A. Crouch

142

REVIEWS 157

BOOK NOTES 162



CHAUTAUQUA REDPATH HORNER CHAMP

Chautauqua

ROSSVILLE
STARTS AUGUST 26

Lasts
5
Days

