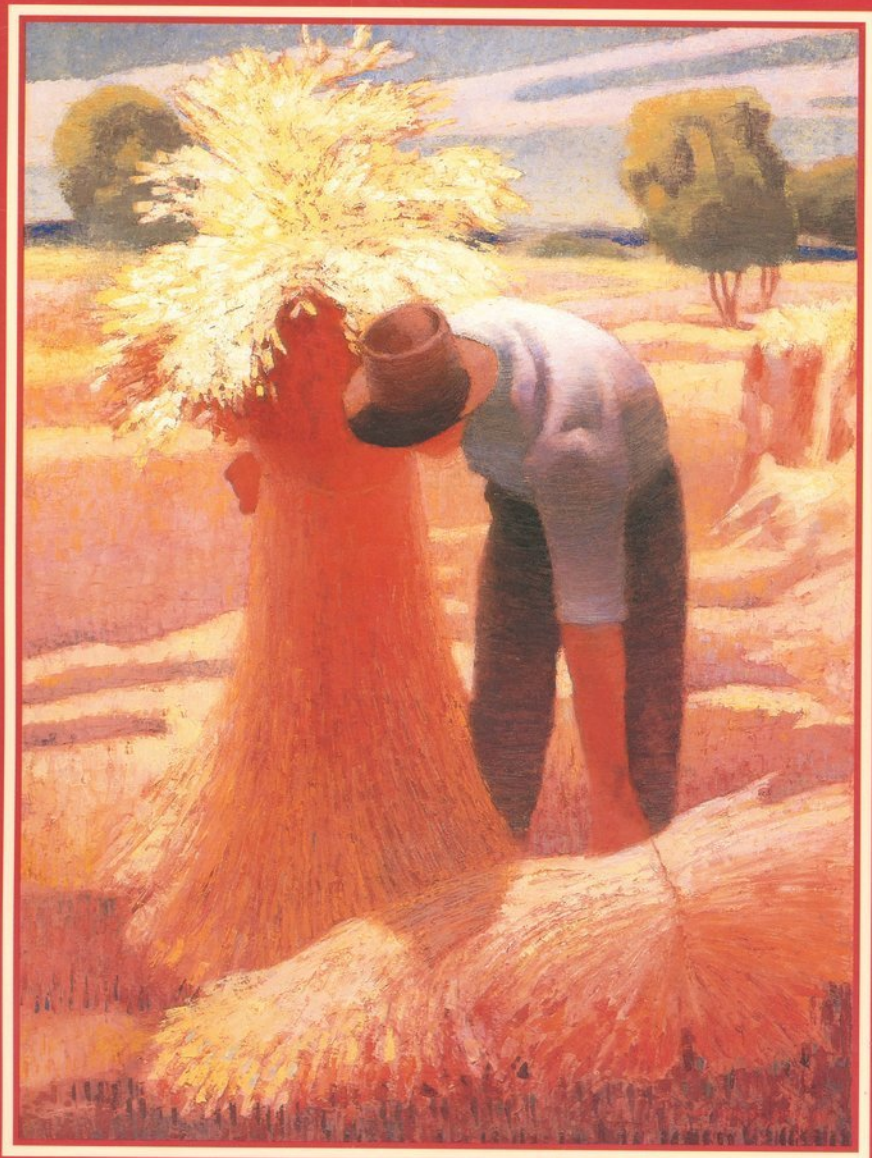
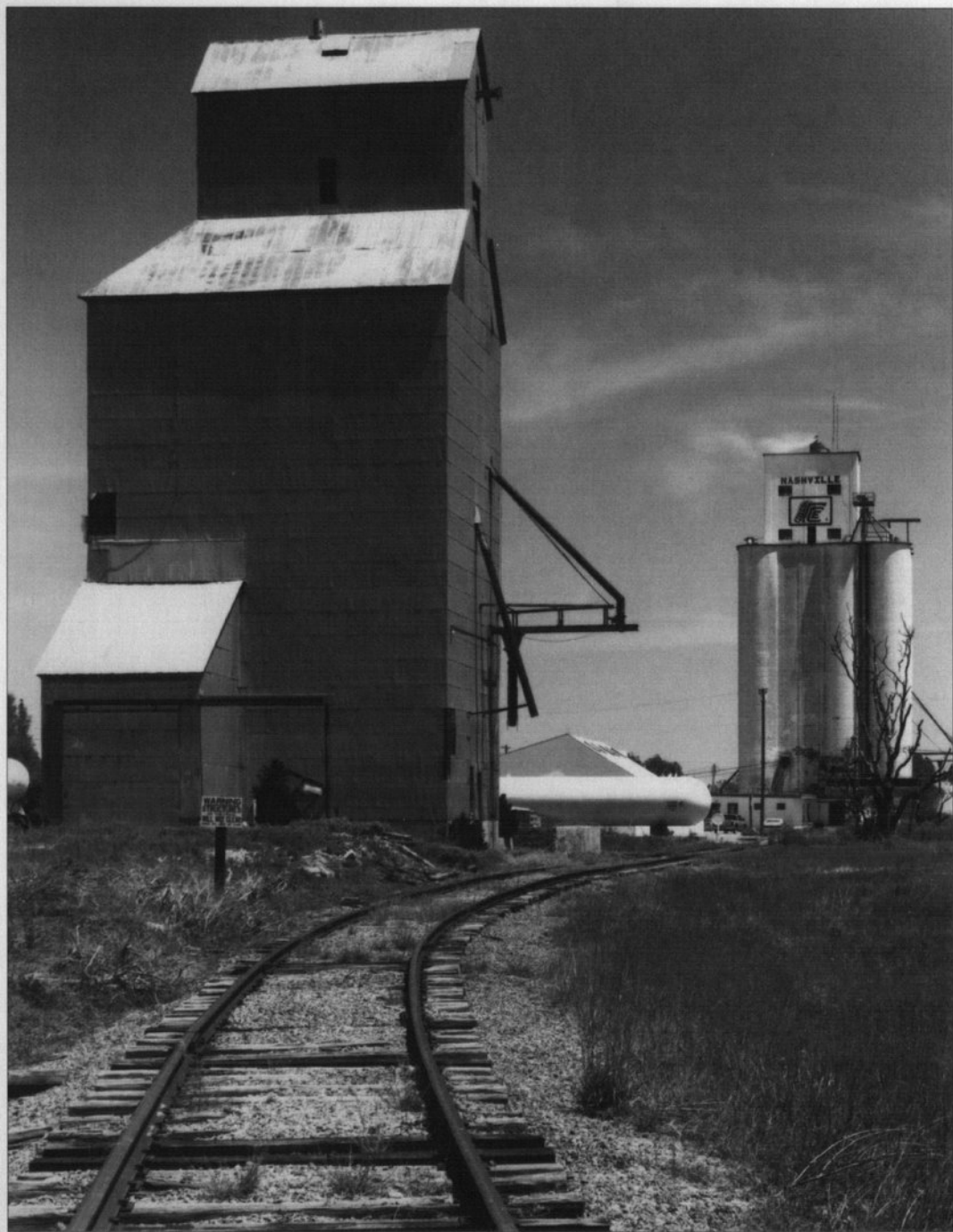


KANSAS HISTORY

A Journal
of the
Central Plains

Volume 23, Number 1-2
Spring-Summer 2000





Grain elevator, Nashville, Kingman County, Kansas

KANSAS HISTORY

VIRGIL W. DEAN
Editor

BOBBIE A. PRAY
Managing Editor

SUSAN S. NOVAK
Associate Editor

Editorial Advisory Board

Thomas Fox Averill
Gayle R. Davis
Donald L. Fixico
James L. Forsythe
Thomas D. Isern
Patricia A. Michaelis
Rita G. Napier
James E. Sherow

*Ex officio Members of the
Editorial Advisory Board*

Jennie Chinn
David A. Haury
Ramon Powers

COVER: Stacking Shocks, oil
on canvas by Gary Ernest
Smith. BACK COVER: Kansas
wheat ready for harvest, sum-
mer 1998. This special issue
of Kansas History is devoted
to wheat in Kansas.

Copyright © 2000 Kansas State Historical Society, Inc. ISSN 0149-9114

Kansas History (USPS 290 620) is published quarterly by the Kansas State Historical Society, Inc., 6425 SW Sixth Avenue, Topeka, Kansas, 66615-1099. It is distributed without charge to members of the Kansas State Historical Society. Membership dues are: basic \$30, family \$35; donor \$50-\$499; sponsor \$500; benefactor \$1,000; and patron \$2,500 or more. Single issues, when available, are \$6. Periodicals postage paid at Topeka, Kansas, and additional mailing office. Postmaster: Send address changes to *Kansas History*, 6425 SW Sixth Avenue, Topeka, Kansas, 66615-1099.

Printed by Allen Press, Inc.,
Lawrence, Kansas.

Volume 23

Spring-Summer 2000

Number 1-2

THE CULTURE OF WHEAT IN KANSAS: Introduction <i>by Homer E. Socolofsky</i>	2
"GIVE US THIS DAY OUR DAILY BREAD": A HARVEST MEMOIR <i>by Elma L. Bamberg; edited by Virgil W. Dean</i>	6
WHEAT EXPLORER THE WORLD OVER: MARK CARLETON OF KANSAS <i>by Thomas D. Isern</i>	12
MILL TOWN KANSAS IN THE AGE OF TURKEY RED <i>by Norman E. Saul</i>	26
THE LEGACY OF COUNTRY GRAIN ELEVATORS: A Photo Essay <i>by Barbara Krupp Selyem, with photographs by Bruce Selyem</i>	42
WOMEN IN WHEAT COUNTRY <i>by Pamela Riney-Kehrberg</i>	56
PRICES, PAYMENTS, & PRODUCTION: KANSAS WHEAT FARMERS AND THE AGRICULTURAL ADJUSTMENT ADMINISTRATION, 1933-1939 <i>by R. Douglas Hurt</i>	72
THE WHEAT EMPIRE OF R. H. GARVEY, 1930-1959 <i>by Craig Miner</i>	88
BEYOND WINTER WHEAT: THE USDA EXTENSION SERVICE AND KANSAS WHEAT PRODUCTION IN THE TWENTIETH CENTURY <i>by Bonnie Lynn-Sherow</i>	100
KANSAS WHEAT HARVEST <i>by Thomas Fox Averill</i>	112
REVIEWS	121
BOOK NOTES	126

