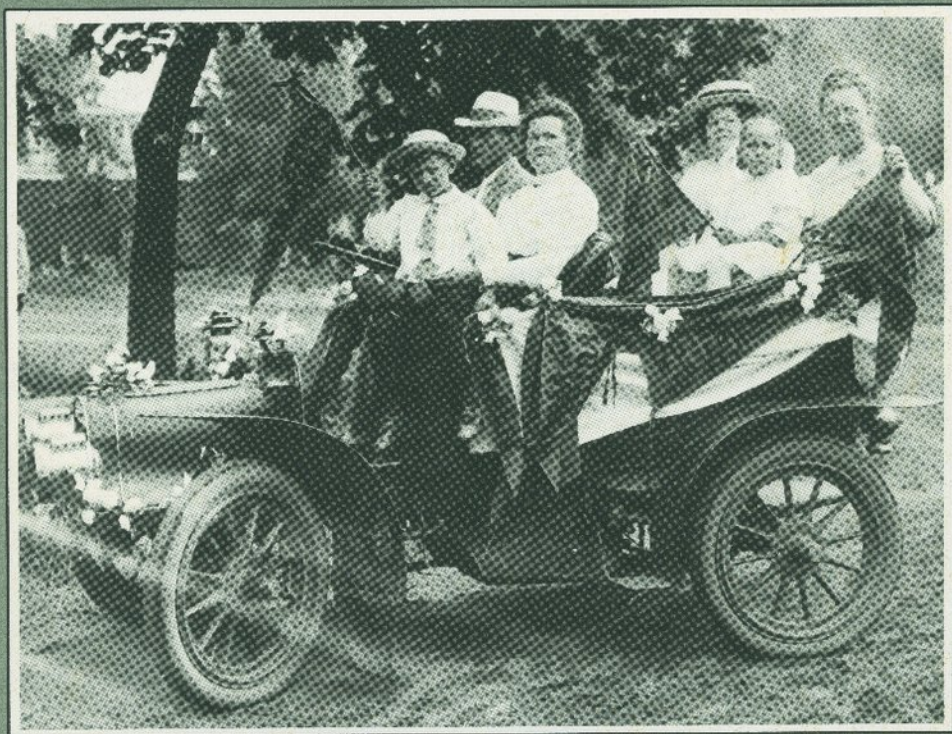


# KANSAS HISTORY

A Journal  
of the  
Central Plains

Volume 9, Number 2  
Summer 1986

---



---

# Kansas State Historical Society

---

Joseph W. Snell, *Executive Director*  
Robert W. Richmond, *Assistant Executive Director*

## EXECUTIVE COMMITTEE

Clifford R. Hope, Jr., Garden City, *Chairman*  
William H. Seiler, Emporia, *Vice-Chairman*  
Harry J. Briscoe, Topeka  
James L. Forsythe, Hays  
Roy Wilford Riegler, Emporia  
Homer E. Socolofsky, Manhattan  
Floyd R. Souders, Cheney  
Calvin Strowig, Abilene  
Paul E. Wilson, Lawrence

## OFFICERS

Donald F. Danker, Topeka, *President*  
Glee Smith, Jr., Larned, *First Vice-President*  
J. Eric Engstrom, Wichita, *Second Vice-President*  
Joseph W. Snell, Topeka, *Secretary*  
Robert W. Richmond, Topeka, *Treasurer*

## Ex officio members

Donald F. Danker, Topeka  
Glee Smith, Jr., Larned  
J. Eric Engstrom, Wichita  
Helen L. Smith, Colby

---

**T**HE KANSAS STATE HISTORICAL SOCIETY was organized in 1875 by the newspaper editors and publishers of the state, and four years later it became the official trustee for the state's historical collections. Since then, the Society has operated both as a non-profit membership organization and as a specially recognized society supported by appropriations from the state of Kansas.

The purposes of the Society are the advancement of knowledge about and the preservation of resources related to the history and prehistory of Kansas and the American West, accomplished through educational and cultural programs, the provision of research services, and the protection of historic properties. The Society is governed by a ninety-nine-member board of directors, elected by the membership, and is administered by an executive director and an assistant executive director.

The new Kansas Museum of History features exhibits and educational programs based on the Society's rich artifact collections. It is located near the historic Pottawatomie Baptist Mission west of Topeka, adjacent to Interstate 70. All other Society departments remain at the Center for Historical Research, Memorial Building, across the street from the State Capitol in Topeka.

All persons interested in Kansas history and prehistory are cordially invited to join the Society. Those who would like to provide additional support for the Society's work may want to consider contributions in the form of gifts or bequests. A representative of the Society will be glad to consult with anyone wishing to make such a gift or establish a bequest or an endowment. Address the Executive Director, 120 West Tenth Street, Topeka, Kansas 66612-1291.

---

**Cover:** Each article in this issue of *Kansas History* illustrates the dramatic spectrum of social, cultural, and political concerns which engaged Kansans during the last half of the nineteenth century. Radical politics, clashes over political and social philosophies, and the participation of blacks and women in a broader range of civic and social institutions were all topics for discussion and argument.

Illustrative of those concerns and controversies is the scene depicted on this issue's cover—woman's suffrage.

Pictured are participants in a 1912 woman's rights parade in Columbus, Kansas. This event, and others like it during the early 1900s, took place forty years after Kansans had elected the first women to county offices and twenty-five years after the first Kansas town had elected a woman mayor. Obviously, the discussion was still ongoing, as it was for the other topics which are presented in this issue of *Kansas History*.

# KANSAS HISTORY

---

Volume 9 Summer 1986 Number 2

---

*Kansas History* (USPS 290 620) is published quarterly by the Kansas State Historical Society, 120 West Tenth Street, Topeka, Kansas 66612-1291. It is distributed without charge to members of the Kansas State Historical Society. Membership dues are as follows: student, \$7.50; individual, \$15.00; family, \$25.00; organization, \$25.00; corporate (annual), \$100.00; life, \$500.00. Membership dues should be sent to Robert W. Richmond, treasurer. Single issues, when available, are \$4.00.

The Society assumes no responsibility for statements of fact or opinion made by contributors.

Second-class postage paid at Topeka, Kansas. Postmaster: Send address changes to *Kansas History*, 120 West Tenth Street, Topeka, Kansas 66612-1291.

Copyright © 1986 Kansas State Historical Society. ISSN 0149-9114.

Articles appearing in *Kansas History* are abstracted and/or indexed in *Historical Abstracts* and *America: History and Life*.

Layout and production: H. M. Ives and Sons, Inc.

Typesetting: H. M. Ives and Sons, Inc.

Printed by H. M. Ives and Sons, Inc.  
Topeka, Kansas

---

Marilyn J. Holt, *Editor*  
Dot E. Taylor, *Associate Editor*  
Bobbie Pray, *Associate Editor*

---

<b>Women Officeholders in Kansas, 1872-1912</b> <i>by Lorraine A. Gehring</i>	48
<b>"Protection to All, Discrimination to None": The Parsons Weekly Blade, 1892-1900</b> <i>by Arnold Cooper</i>	58
<b>The Kansas Response to the Haymarket Affair</b> <i>by Fred Whitehead</i>	72
<b>Kansas Frontierwomen Viewed Through Their Writings: The Diary of Chestina Bowker Allen</b> <i>edited by Glenda Riley</i>	83
<b>Book Reviews</b>	96
<b>Book Notes</b>	100
<b>Picture Credits</b>	103

---