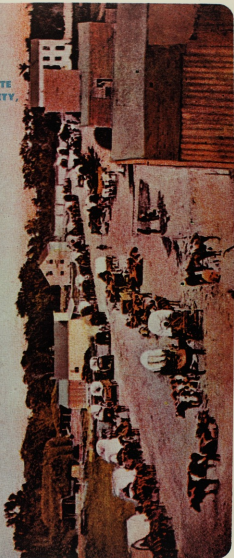


**THE KANSAS  
HISTORICAL  
QUARTERLY**

**PUBLISHED BY  
THE KANSAS STATE  
HISTORICAL SOCIETY,  
TOPEKA**

**SUMMER 1961**

Manhattan, Kans., Street Scene in the 60's



NYLE H. MILLER  
*Managing Editor*

KIRKE MECHEM  
*Editor*

JAMES C. MALIN  
*Associate Editor*

---

## CONTENTS

---

	PAGE
ELLSWORTH, 1869-1875: The Rise and Fall of a Kansas Cowtown .....	Robert Dykstra, 161
With map of Ellsworth county, 1875, p. 187.	
THE EARLY CAREER OF C. K. HOLLIDAY: A Founder of Topeka and of the Santa Fe Railroad .....	Frederick F. Seely, 193
With portraits of Mr. and Mrs. Cyrus Kurtz Holliday, facing p. 192.	
KANSAS BEFORE 1854: A Revised Annals, Part Two, 1763-1803 .....	Compiled by Louise Barry, 201
With a George Catlin sketch of Kansa Indians, about 1831, facing p. 208, and the reproduction of a portion of Francois M. Perrin du Lac's <i>Carte du Missouri</i> , 1802, facing p. 209.	
SOME NOTES ON KANSAS COWTOWN POLICE OFFICERS AND GUN FIGHTERS —Continued .....	Nyle H. Miller and Joseph W. Snell, 220
With portraits of Rowdy Joe Lowe, and William B., Edward J., and James P. Masterson, facing p. 240; reproduction of a page of the Delmonico Hotel register, Dodge City, and a photograph of Mr. and Mrs. Thomas Masterson, parents of the Masterson trio of lawmen, facing p. 241.	
RECENT ADDITIONS TO THE LIBRARY, Compiled by Alberta Pantle, Librarian, 277	
BYPATHS OF KANSAS HISTORY .....	304
KANSAS HISTORY AS PUBLISHED IN THE PRESS .....	305
KANSAS HISTORICAL NOTES .....	308

*The Kansas Historical Quarterly* is published four times a year by the Kansas State Historical Society, 120 W. Tenth St., Topeka, Kan. It is distributed without charge to members of the Society; nonmembers may purchase single issues, when available, for 75 cents each. Membership dues are: annual, \$5; annual sustaining, \$10; life, \$20. Membership applications and dues should be sent to Mrs. Lela Barnes, treasurer.

Correspondence concerning articles for the *Quarterly* should be addressed to the managing editor. The Society assumes no responsibility for statements made by contributors.

Second-class postage has been paid at Topeka, Kan.

---

### THE COVER

Manhattan street scene of the early 1860's. A black and white print was hand-tinted in Germany about 1910 to make a color post card. John Ripley, Topeka, provided the copy reproduced here.